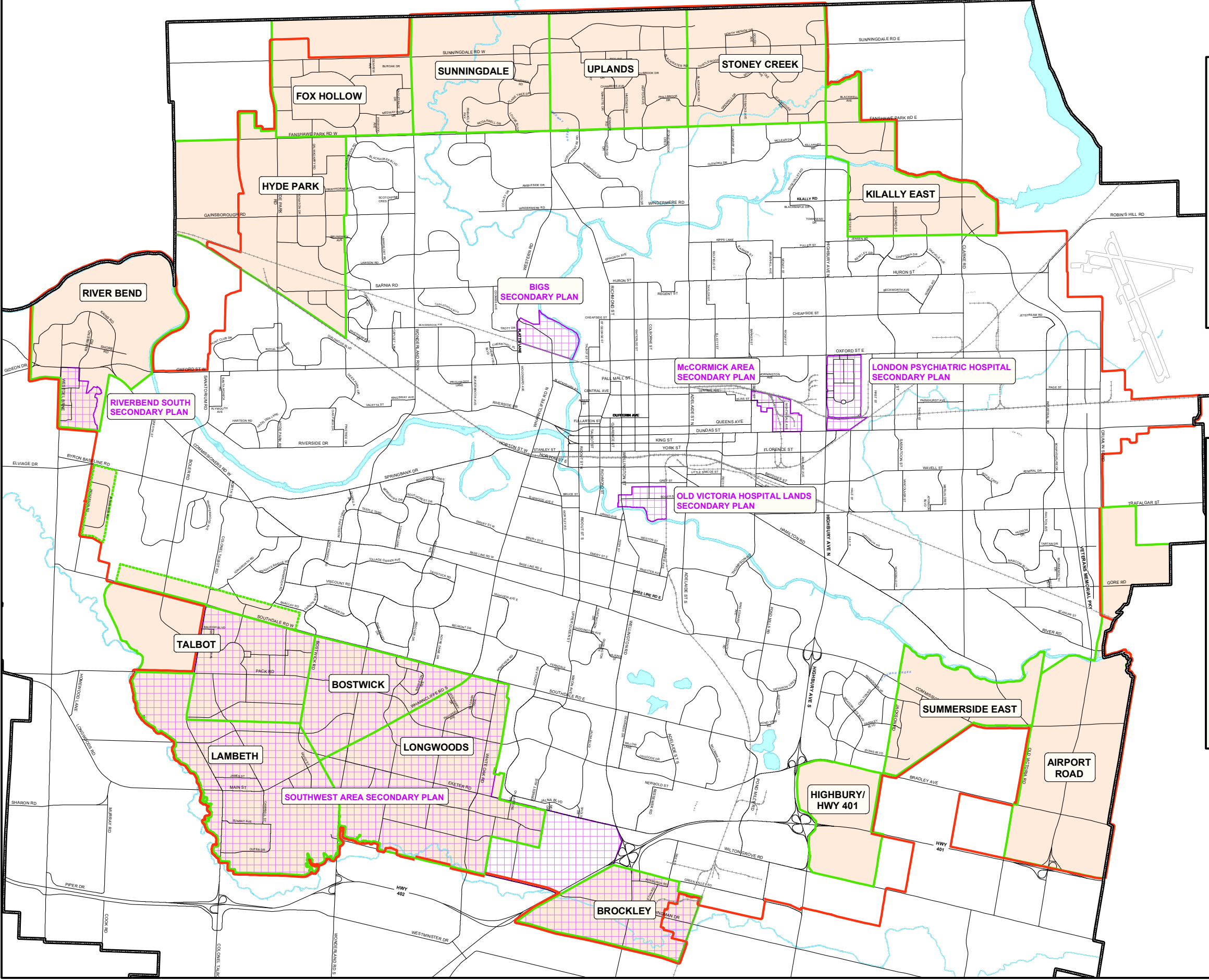


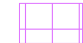



Schedule D to the City of London Official Plan - Planning Areas






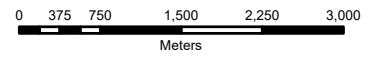
London
CANADA

This is an Office Consolidation of the Official Plan for the City of London which has been prepared for information only containing all textual and mapping amendments up to and including April 15, 2013. While every effort has been made to ensure that the text and mapping are accurate, a reader should verify all information contained in this consolidation before acting upon it by reviewing the Official Plan and amendments which are available in the City Clerk's Department, Suite 308, 300 Dufferin Avenue, London, Ontario, N6B 1Z2 or by calling (519) 661-2500 extension 4939

-  Planning Area
-  Extensions to Existing Communities
-  Secondary Plans
-  Urban Growth Boundary

BASE MAP FEATURES

-  Railways
-  Rivers/Streams
-  Streets (refer to Schedule 'C')



THIS MAP MUST BE READ IN CONJUNCTION WITH THE TEXT OF THE OFFICIAL PLAN