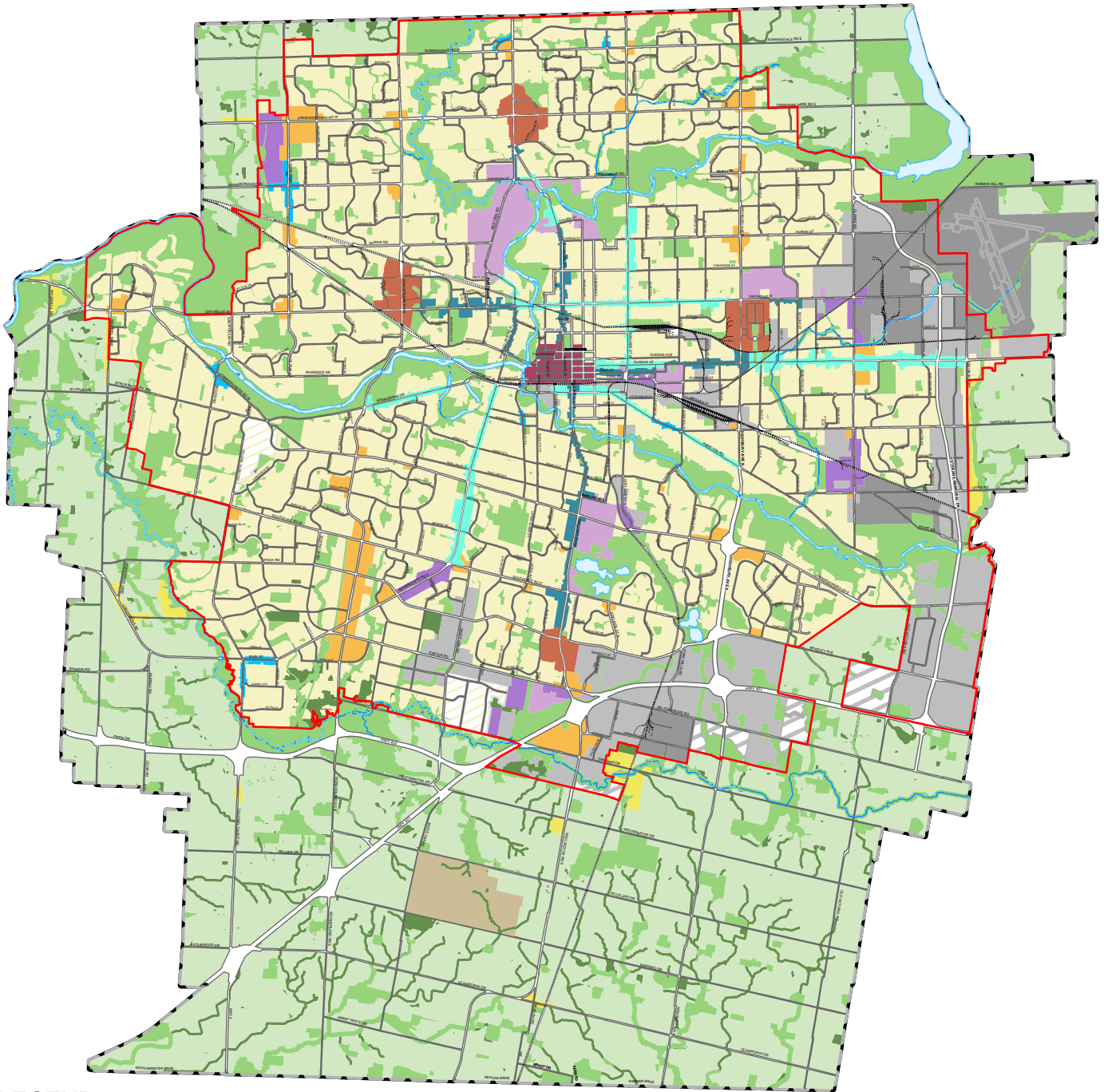




# APPENDIX 1 - MAPS

MAP 1 - PLACE TYPES



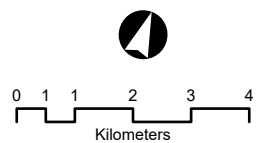
LEGEND

- Green Space
- Environmental Review
- Downtown
- Transit Village
- Rapid Transit Corridor
- Urban Corridor
- Shopping Area
- Main Street
- Neighbourhoods
- Institutional

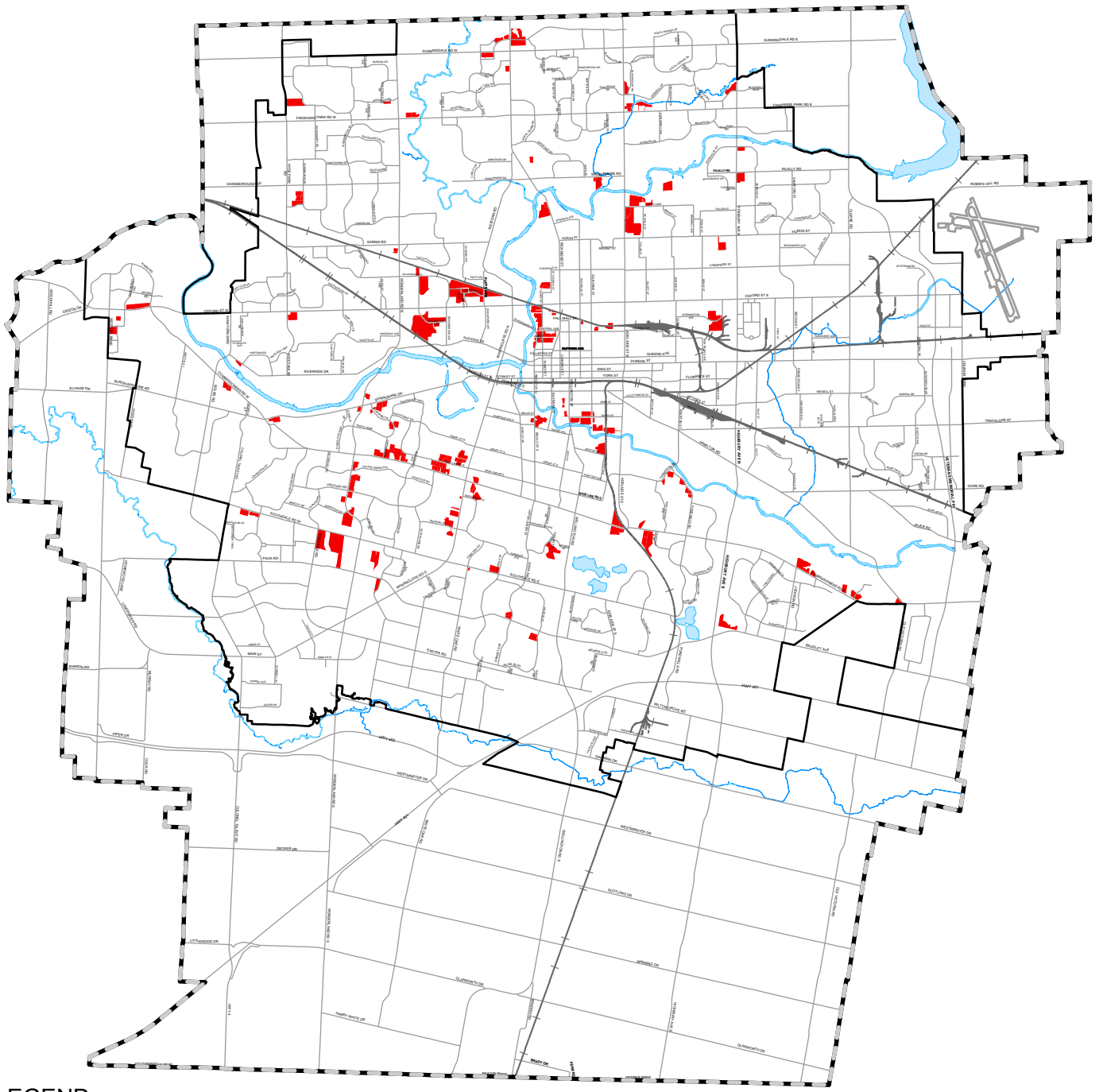
- Heavy Industrial
- Light Industrial
- Commercial Industrial
- Future Community Growth
- Future Industrial Growth
- Farmland
- Rural Neighbourhoods
- Waste Management Resource Recovery Area
- Urban Growth Boundary

BASE MAP FEATURES

- Streets (See Map 3)
- Railways
- Water Courses/Ponds




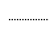


# MAP 2 - HIGH DENSITY RESIDENTIAL OVERLAY (FROM 1989 OFFICIAL PLAN)

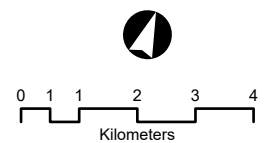


## LEGEND

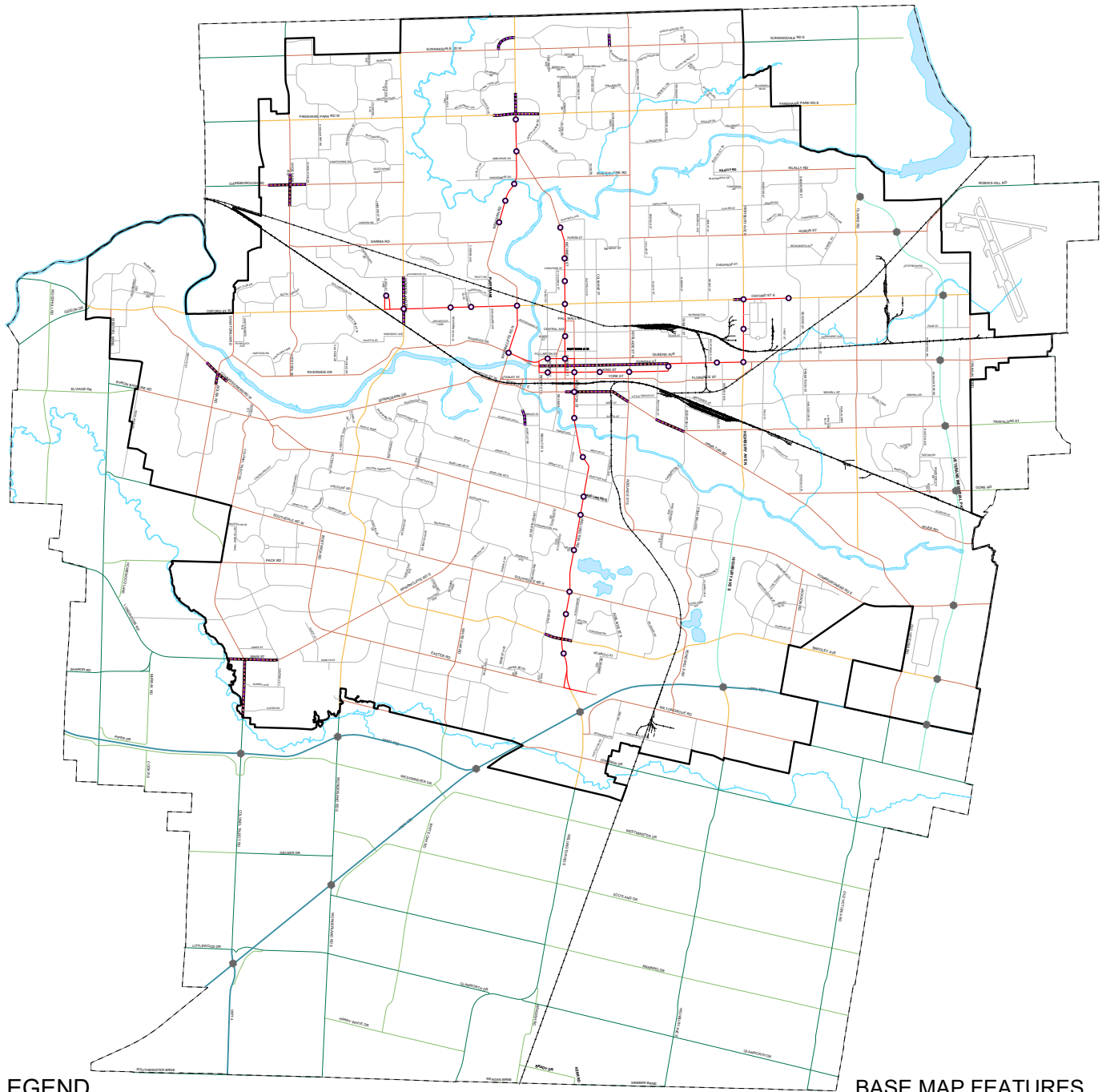
 High Density Residential Overlay (from the 1989 Official Plan)

## BASE MAP FEATURES

-  Streets (See Map 3)
-  Railways
-  Urban Growth Boundary
-  Water Courses/Ponds



MAP 3 - STREET CLASSIFICATIONS

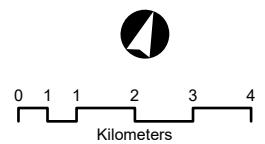


LEGEND

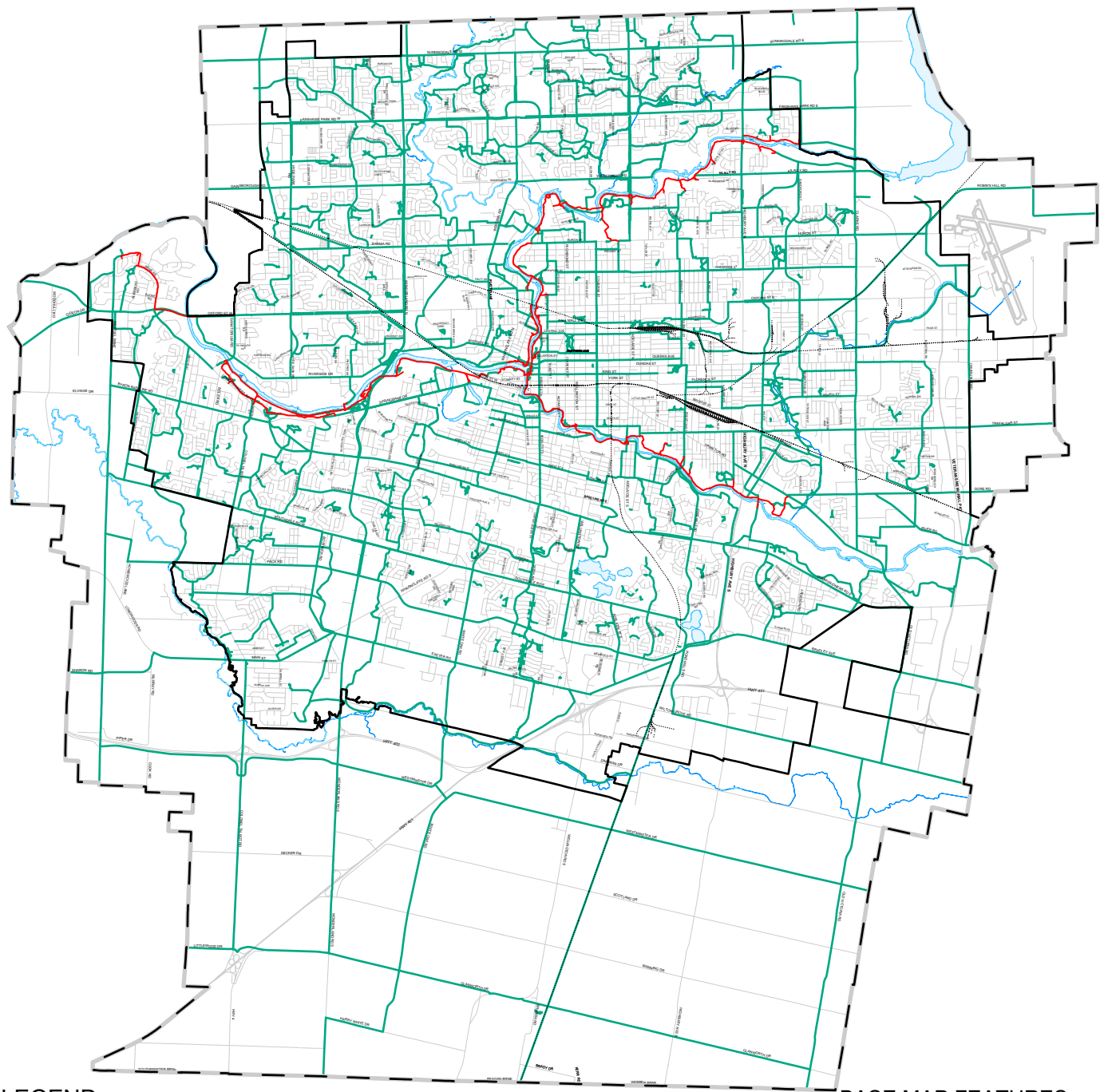
- Provincial Highway
- Expressway
- Urban Thoroughfare
- Rapid Transit Boulevard
- Civic Boulevard
- Main Street
- Neighbourhood Connector
- Rural Thoroughfare
- Rural Connector
- Interchanges
- Rapid Transit Stations

BASE MAP FEATURES

- Streets (See Map 3)
- Railways
- Water Courses/Ponds



# MAP 4 - ACTIVE MOBILITY NETWORK

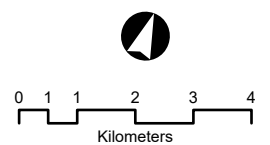


## LEGEND

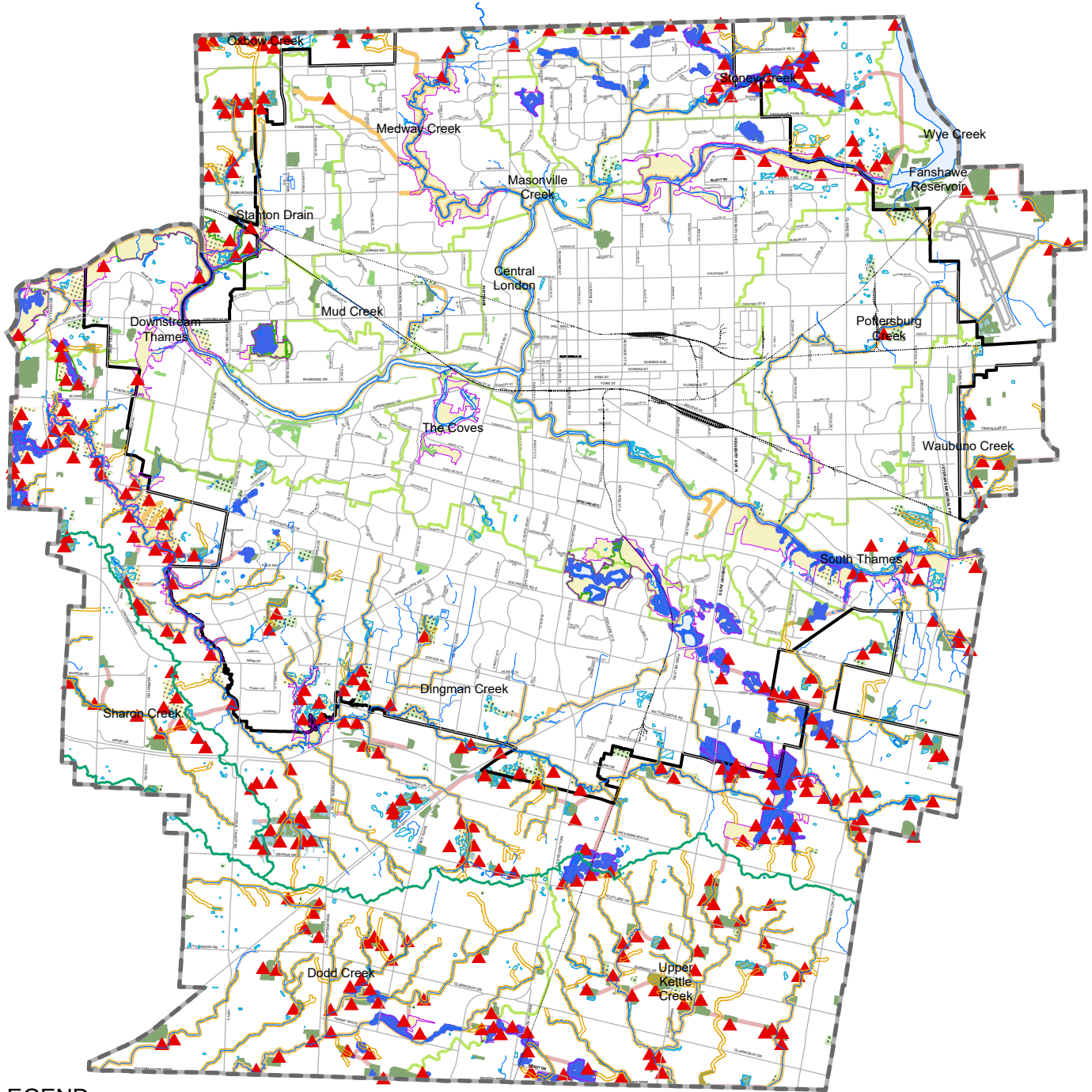
- Thames Valley Parkway
- Walking and Cycling Routes

## BASE MAP FEATURES

- Streets (See Map 3)
- Railways
- Urban Growth Boundary
- Water Courses/Ponds



MAP 5 - NATURAL HERITAGE



LEGEND

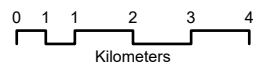
- Provincially Significant Wetlands
- Wetlands
- Unevaluated Wetlands
- Significant Woodlands
- Woodlands
- Significant Valleylands
- Valleylands
- Areas of Natural and Scientific Interest
- Environmentally Significant Areas (ESA)
- Potential ESAs

- Upland Corridors
- Potential Naturalization Areas
- Unevaluated Vegetation Patches

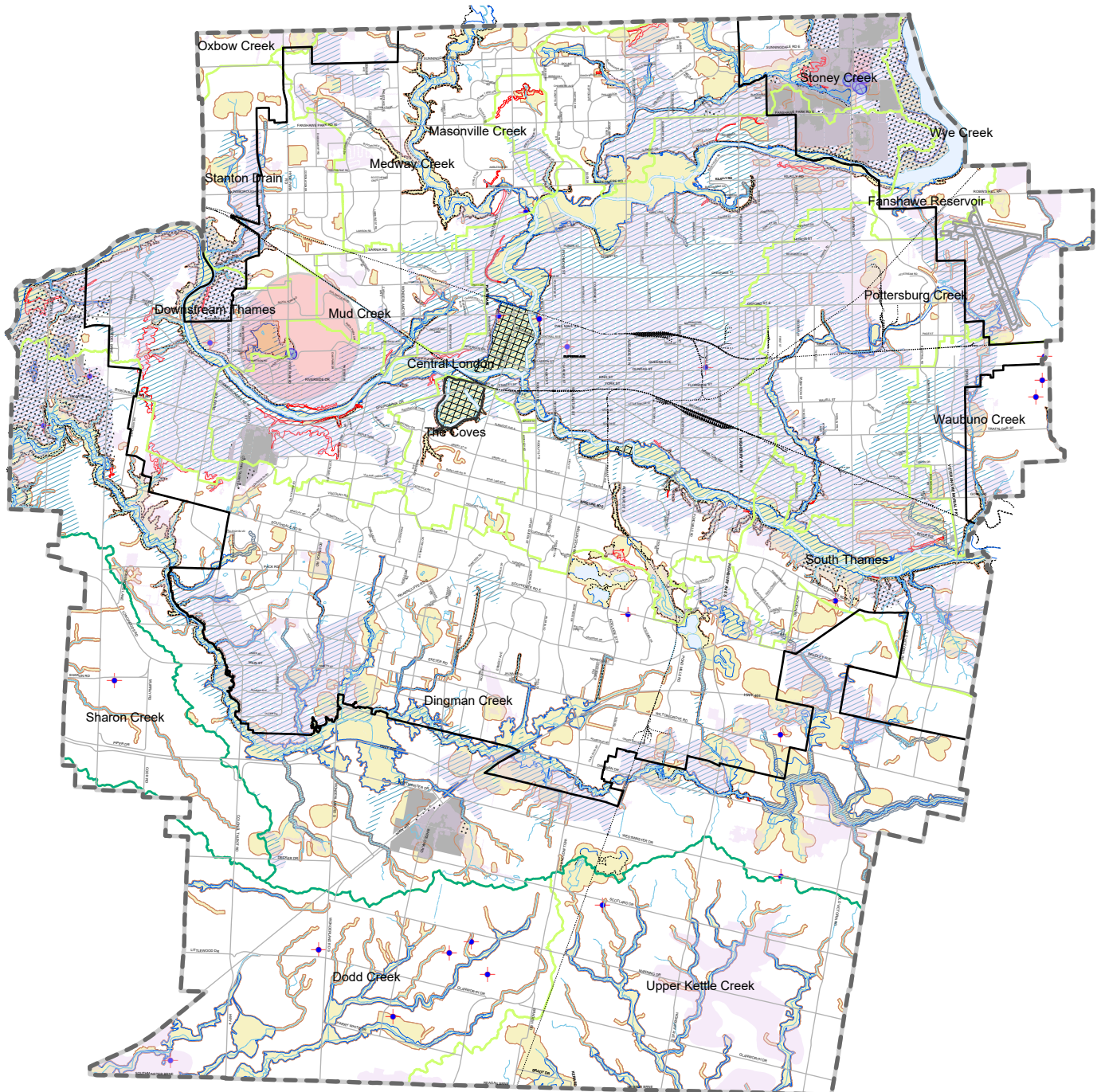
BASE MAP FEATURES

- Streets (See Map 3)
- Railways
- Urban Growth Boundary
- Water Courses/Ponds
- Conservation Authority Boundary
- Subwatershed Boundary
- Subwatershed Name

Stoney  
Creek



MAP 6 - HAZARDS AND NATURAL RESOURCES



NATURAL HAZARDS

- Regulatory Flood Line (see Note 1 and 2)
- Special Policy Areas
- Potential Special Policy Areas
- Riverine Erosion Hazard Limit for Confined Systems
- Riverine Erosion Hazard Limit for Unconfined Systems
- Maximum Hazard Line
- Conservation Authority Regulation Limit
- Abandoned Oil/Gas Wells

NATURAL RESOURCES

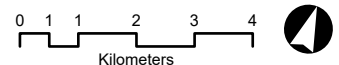
- Aggregate Resource Areas
- Extractive Industrial Areas
- Wellhead Protection Area
- Emergency Municipal Water Wells
- Significant Groundwater Recharge Areas
- Highly Vulnerable Aquifers

BASE MAP FEATURES

- Streets (See Map 3)
- Railways
- Urban Growth Boundary
- Water Courses/Ponds
- Conservation Authority Boundary
- Subwatershed Boundary
- Stoney Creek Subwatershed Name

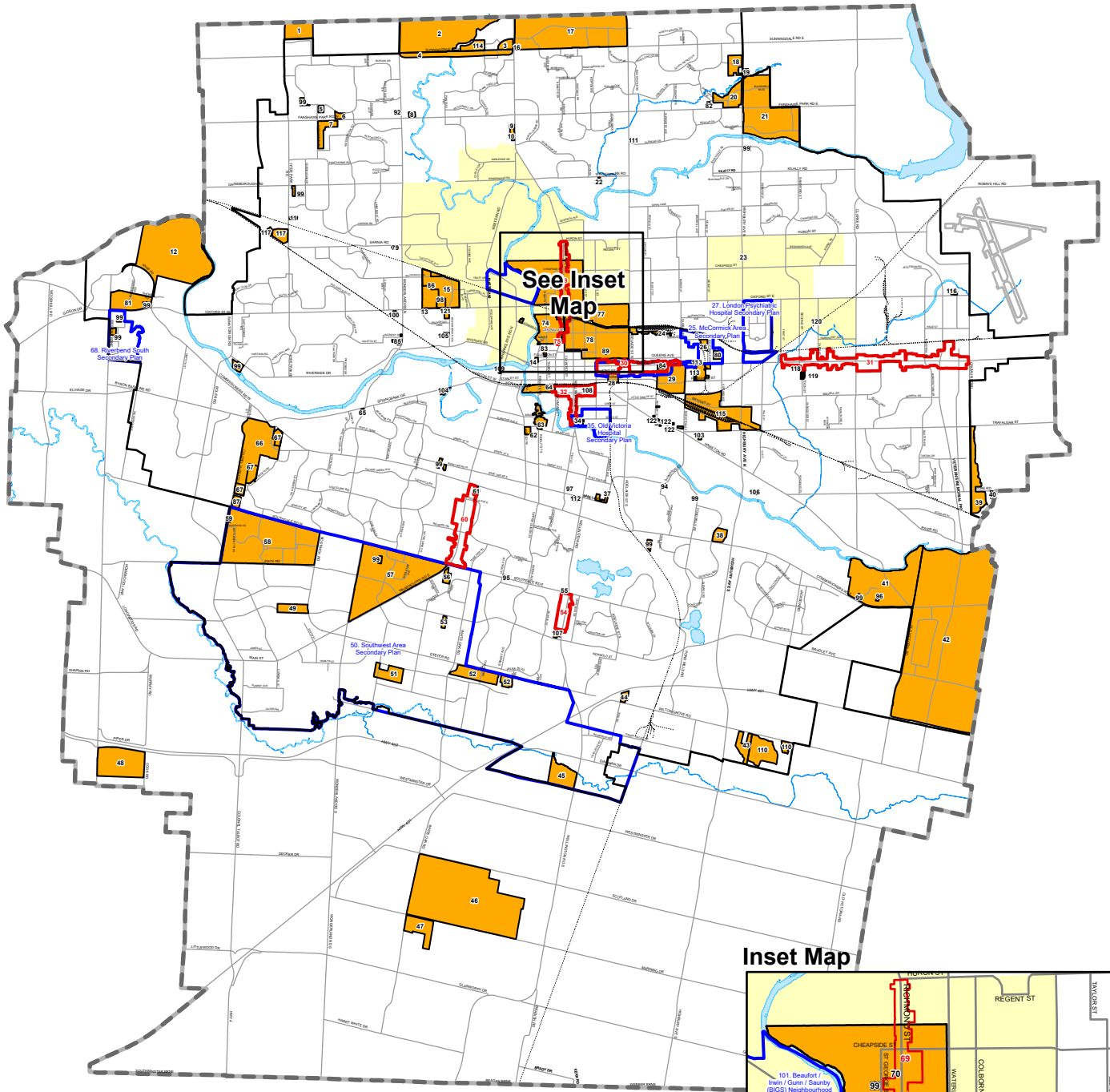
Note 1: Flood Lines shown on this map are approximate. The precise delineation of flood plain mapping is available from the Conservation Authority having jurisdiction

Note 2: Flood Fringe mapping for certain areas of the City is available from the Upper Thames Conservation Authority

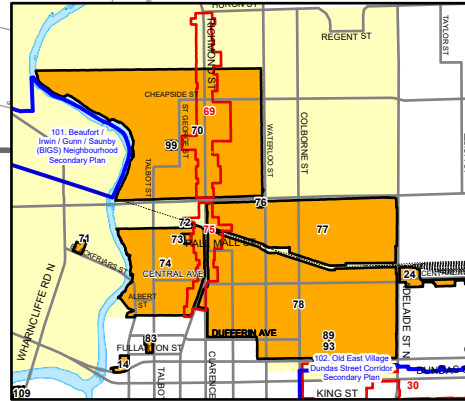




MAP 7 - SPECIFIC POLICY AREAS



**Inset Map**



**LEGEND**

- Specific Policies
- Rapid Transit and Urban Corridor Specific-Segment Policies
- Near Campus Neighbourhood Area
- Secondary Plans

**BASE MAP FEATURES**

- Streets (See Map 3)
- Railways
- Urban Growth Boundary
- Water Courses/Ponds



MAP 7 - SPECIFIC POLICY AREAS (CONTINUED)

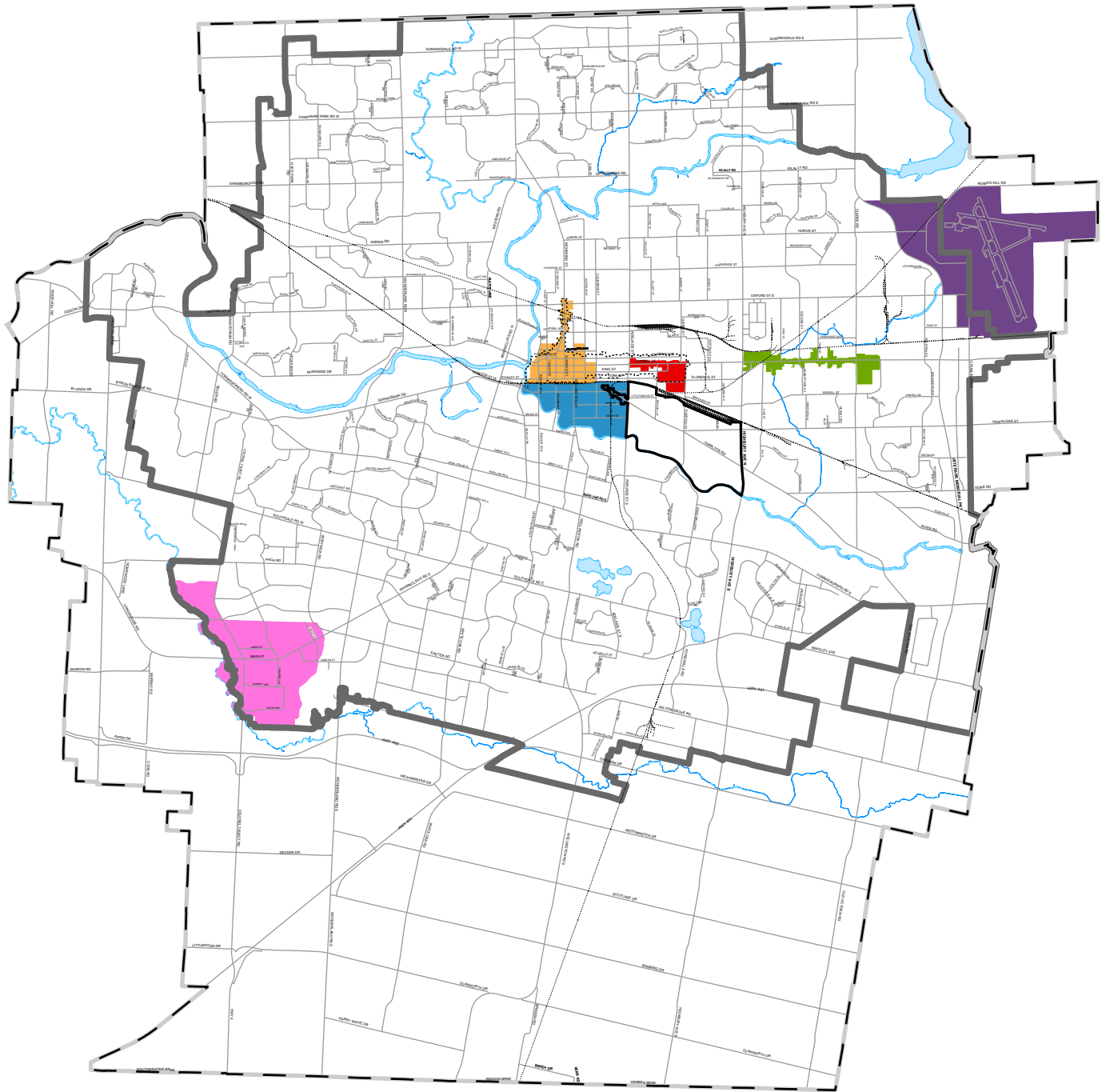
SPECIFIC POLICIES		
Map ID Number	Policy Name	Chapter Location
1	2701 Hyde Park Road	Farmland
2	Sunningdale North	Natural Heritage
3	Sunningdale North	Shopping Area
4	Sunningdale Road West between Richmond Street and Wonderland Road North	Our Tools - Acquisition and Disposition of Land
5	2825 Tokala Trail	Neighbourhoods
6	1055 Fanshawe Park Road	Neighbourhoods
7	1960 Dalmagarry Road, 669 and 705 Freeport Street	Neighbourhoods
8	545 Fanshawe Park Road West	Neighbourhoods
9	1643, 1649, and 1653 Richmond Street	Transit Village
10	Richmond Street – Old Masonville	Transit Village
11	1351 and 1357 Hyde Park Road	Main Street, Neighbourhoods
12	River Bend Phase 1 Lands	Neighbourhoods
13	450 Oxford Street West	Rapid Transit and Urban Corridors
14	435-451 Ridout Street North	Downtown
15	323 Oxford Street West, 92 Proudfoot Lane and 825 Proudfoot Lane	Neighbourhoods
16	2118 Richmond Street	Neighbourhoods
17	Uplands North	Neighbourhoods
18	2135, 2185, and 2225 Highbury Avenue North	Neighbourhoods
19	2156 Highbury Avenue North	Green Space, Farmland
20	1300 Fanshawe Park Road East	Shopping Area
21	Kilally North	Natural Resources
22	651 Windermere Road	Neighbourhoods
23	1192 Highbury Avenue North and 3 Mark Street	Neighbourhoods
24	Central Avenue, between Adelaide and Ontario Streets	Neighbourhoods
25	McCormick Area Secondary Plan	Secondary Plans
26	1111 Elias Street	Industrial
27	London Psychiatric Hospital Secondary Plan	Secondary Plans
28	York Street Corridor	Industrial
29	Western Fairgrounds	Institutional
30	Old East Village Specific-Segment	Rapid Transit and Urban Corridors
31	Dundas Street Specific-Segment	Rapid Transit and Urban Corridors
32	SoHo Specific-Segment	Rapid Transit and Urban Corridors
33	South Street and Waterloo Street	Neighbourhoods
34	Wellington Street and South Street	Rapid Transit and Urban Corridors
35	Old Victoria Hospital Secondary Plan	Secondary Plans
36	176 and 184 Rectory Street	Neighbourhoods
37	Baseline Office Area	Institutional
38	1200 Commissioners Road East	Shopping Area
39	Crumlin/Gore Road	Rural Neighbourhoods

SPECIFIC POLICIES		
Map ID Number	Policy Name	Chapter Location
40	3345 Gore Road	Farmland
41	Old Victoria Community	Neighbourhoods
42	Airport Road South Innovation Park	Industrial
43	1497 and 1543 Wilton Grove Road	Green Space, Future Growth
44	920 Wilton Grove Road	Industrial
45	4645 Wellington Road South	Industrial
46	The W12A Landfill Site	Waste Management Resource Recovery Area
47	6100 White Oak Road	Green Space, Farmland
48	5067 and 5221 Cook Road	Farmland
49	3725 Bostwick Road	Neighbourhoods
50	Southwest Area Secondary Plan	Secondary Plans
51	4585 Blakie Road	Neighbourhoods
52	Exeter/White Oak Lands	Industrial
53	3425 Roe Street	Industrial
54	Wellington Road Specific-Segment	Rapid Transit and Urban Corridors
55	827 Nadine Avenue	Neighbourhoods
56	940 and 956 Wharnccliffe Road South	Industrial
57	Bostwick East	Neighbourhoods
58	North Talbot Community	Neighbourhoods
59	3100 Colonel Talbot Road	Neighbourhoods
60	Wharnccliffe Road South Specific-Segment	Rapid Transit and Urban Corridors
61	9 and 11 Commissioners Road East	Neighbourhoods
62	165 Elmwood Avenue East	Green Space
63	37 – 95 and 20 – 100 Ridout Street South	Neighbourhoods
64	Horton Street Corridor West	Industrial
65	598 – 608 Springbank Drive	Neighbourhoods
66	Byron Gravel Pits	Future Growth
67	Byron Gravel Pits and Adjacent Lands	Natural Resources
68	Riverbend South Secondary Plan	Secondary Plans
69	Old North Richmond Street Specific-Segment	Rapid Transit and Urban Corridors
70	St. George/Grosvenor Neighbourhood	Neighbourhoods
71	75 Blackfriars Street	Neighbourhoods
72	180 Ann Street	Neighbourhoods
73	180 Mill Street	Neighbourhoods
74	Talbot Mixed-Use Area	Neighbourhoods
75	Richmond Row Specific-Segment	Rapid Transit and Urban Corridors
76	733 – 747 Waterloo Street	Neighbourhoods
77	Piccadilly Area Neighbourhood	Neighbourhoods
78	Woodfield Neighbourhood	Neighbourhoods
79	520 Sarnia Road	Neighbourhoods
80	1156 Dundas Street	Neighbourhoods
81	River Bend West Five Lands	Shopping Area, Neighbourhoods

SPECIFIC POLICIES		
Map ID Number	Policy Name	Chapter Location
82	1150 Fanshawe Park Rd E	Neighbourhoods
83	100 Fullarton St, 475-501 Talbot St, 93-95 Dufferin Ave	Downtown
84	809 Dundas Street	Rapid Transit and Urban Corridors
85	556 Wonderland Road North	Neighbourhoods
86	Mud Creek EA	Green Space, Rapid Transit and Urban Corridors, Neighbourhoods
87	952 Southdale Rd W	Neighbourhoods
88	1018 and 1028 Gainsborough Rd	Neighbourhoods
89	464-466 Dufferin Ave and 499 Maitland St	Neighbourhoods
90	584-588 Wonderland Rd N	Neighbourhoods
91	122 Base Line Rd W	Neighbourhoods
92	1761 Wonderland Rd N	Shopping Area
93	467-469 Dufferin Ave	Neighbourhoods
94	403 Thompson Rd	Neighbourhoods
95	400 Southdale Rd E	Neighbourhoods
96	1938 and 1964 Commissioners Rd E	Neighbourhoods
97	345 Sylvan St	Neighbourhoods
98	415 Oxford St W	Neighbourhoods
99	Site Specific Policies in the HDR Overlay	Neighbourhoods
100	600 Oxford Street West	Transit Village
101	Beaufort / Irwin / Gunn / Saunby (BIGS) Neighbourhood Secondary Plan	Secondary Plans
102	Old East Village Dundas Street Corridor Secondary Plan	Secondary Plans
103	18 Elm Street	Neighbourhoods
104	250-272 Springbank Drive	Rapid Transit and Urban Corridors
105	604 Beaverbrook Avenue	Neighbourhoods
106	21-41 Meadowlily Road	Neighbourhoods
107	1067, 1069, and 1071 Wellington Road	Transit Village
108	240 Waterloo Street and 358 Horton Street East	Rapid Transit and Urban Corridors
109	21 Wharnccliffe Road South	Neighbourhoods
110	1577 and 1687 Wilton Grove Road	Industrial
111	1448 Adelaide Street North	Neighbourhoods
112	633, 635, 637, 645, 649, 651, and 655 Base Line Road East	Neighbourhoods
113	100, 335, and 353 Kellogg Lane; 1063, 1080, 1097, and 1127 Dundas Street; and 1151 York Street	Industrial, Neighbourhoods, and Rapid Transit and Urban Corridors
114	379 Sunningdale Road West	Neighbourhoods
115	Brydges Street Area	Industrial
116	2150 Oxford Street East	Industrial
117	1176, 1200, and 1230 Hyde Park Road	Neighbourhoods
118	335-385 Saskatoon Street	Neighbourhoods
119	340-390 Saskatoon Street	Neighbourhoods

SPECIFIC POLICIES		
Map ID Number	Policy Name	Chapter Location
120	585 Third Street	Neighbourhoods
121	676-700 Beaverbrook Avenue and 356 Oxford Street	Rapid Transit and Urban Corridors
122	Hamilton Road Main Street Area	Neighbourhoods

# MAP 8 - COMMUNITY IMPROVEMENT PROJECT AREAS

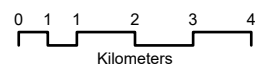


## LEGEND

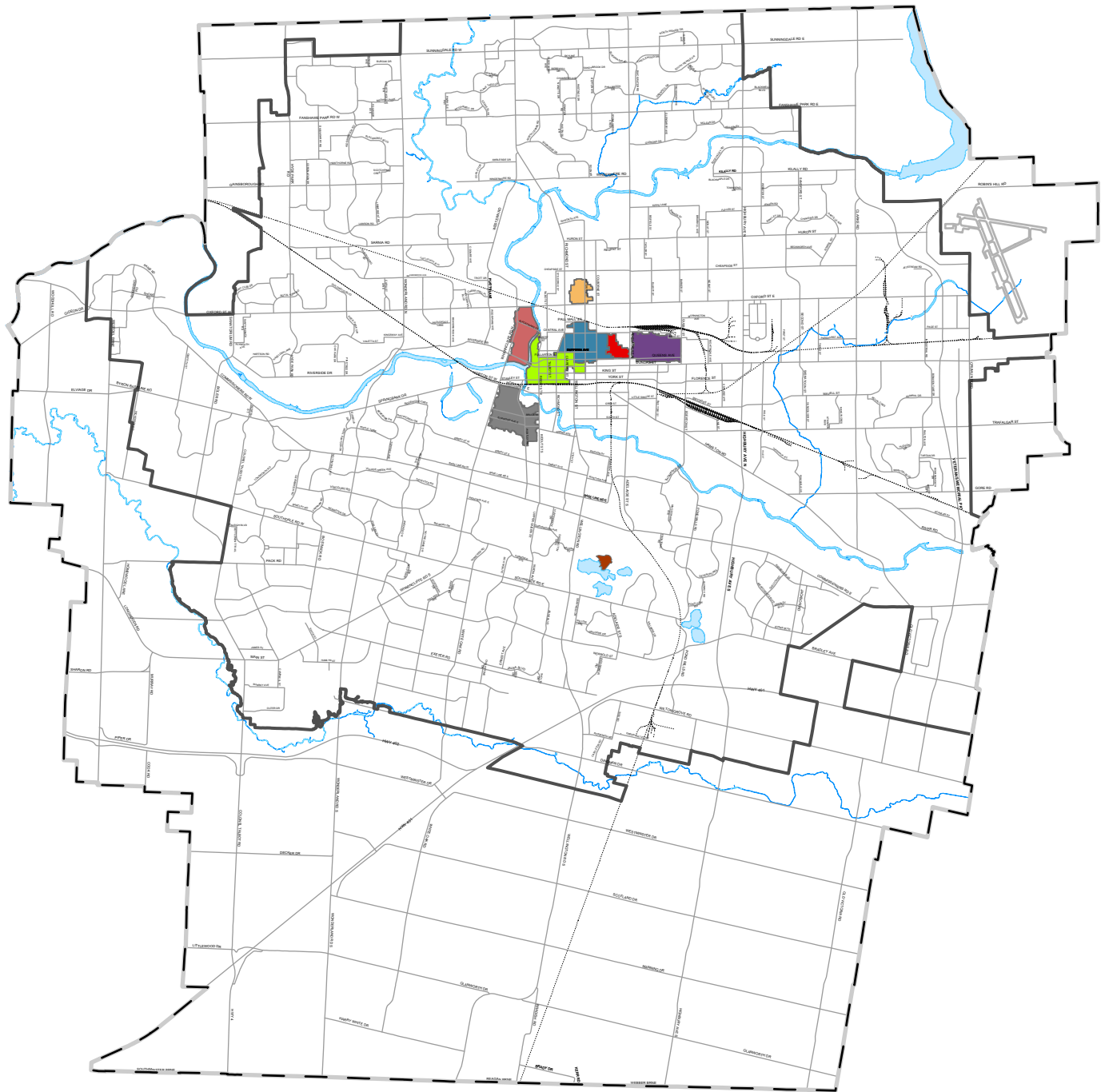
- Airport Road CIP
- Argyle Core Area CIP
- Core Area CIP
- Downtown CIP
- Hamilton Road CIP
- Lambeth CIP
- Old East Village CIP
- SOHO CIP

## BASE MAP FEATURES

- Streets (See Map 3)
- Railways
- Urban Growth Boundary
- Water Courses/Ponds



# MAP 9 - HERITAGE CONSERVATION DISTRICTS AND CULTURAL HERITAGE LANDSCAPES



### HERITAGE CONSERVATION DISTRICTS

- Bishop Helmuth Heritage Conservation District (2003)
- Blackfriars/Petersville Heritage Conservation District (2015)
- Downtown Heritage Conservation District (2012)
- Old East Village Heritage Conservation District (2006)
- East Woodfield Heritage Conservation District (1993)
- West Woodfield Heritage Conservation District (2008)
- Wortley Village - Old South Heritage Conservation District (2015)

### Cultural Heritage Landscapes

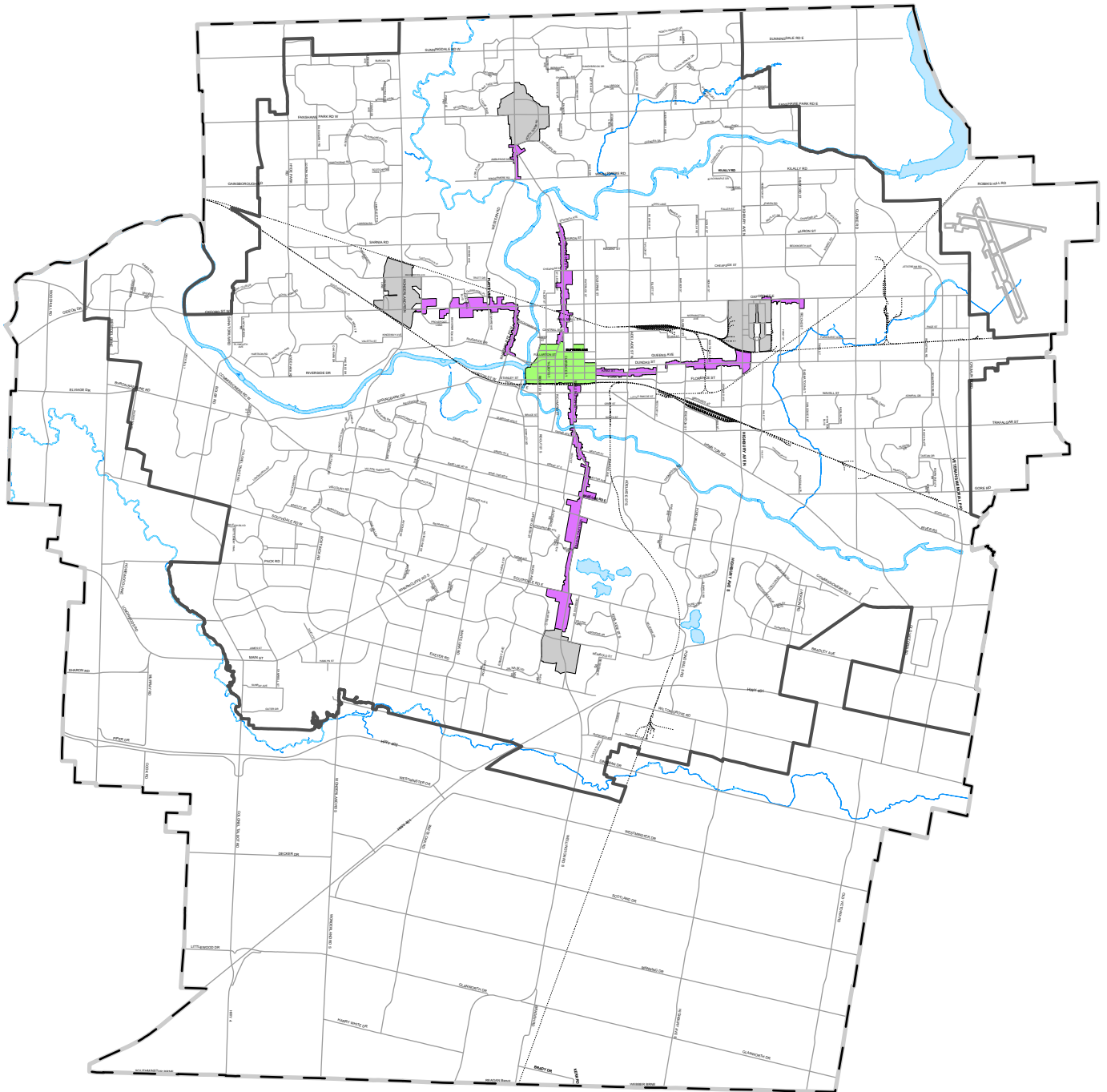
- Western Counties Health and Occupation Centre Grounds

### BASE MAP FEATURES

- Streets (See Map 3)
- Railways
- Urban Growth Boundary
- Water Courses/Ponds



MAP 10 – PROTECTED MAJOR TRANSIT STATION AREAS (OPA 30)



**LEGEND**

- Downtown Protected Major Transit Station Area
- Rapid Transit Protected Major Transit Station Area
- Transit Village Protected Major Transit Station Area

**BASE MAP FEATURES**

- Streets (See Map 3)
- Railways
- Urban Growth Boundar
- Water Courses/Ponds

