

Purple Hatching: Existing, and remaining, natural heritage feature  
Blue Hatching: Added lands to Map 5 – Natural Heritage  
Red Hatching: Deleted lands from Map 5 – Natural Heritage

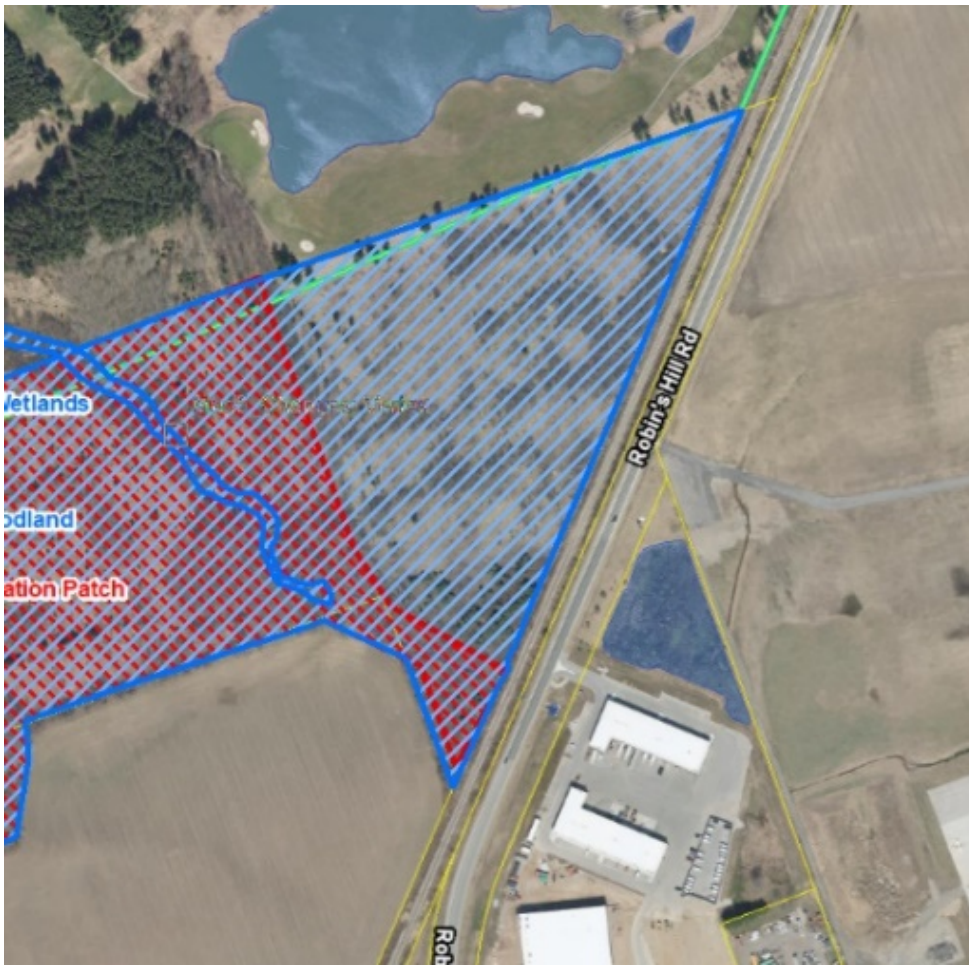


City of London; 1410 Lawson Drive  
Added: Significant Woodlands and Wetlands



2310 Red Thorne Ave; Previous Application: OZ-8393  
Removed: Unevaluated Wetlands  
Added: Wetlands





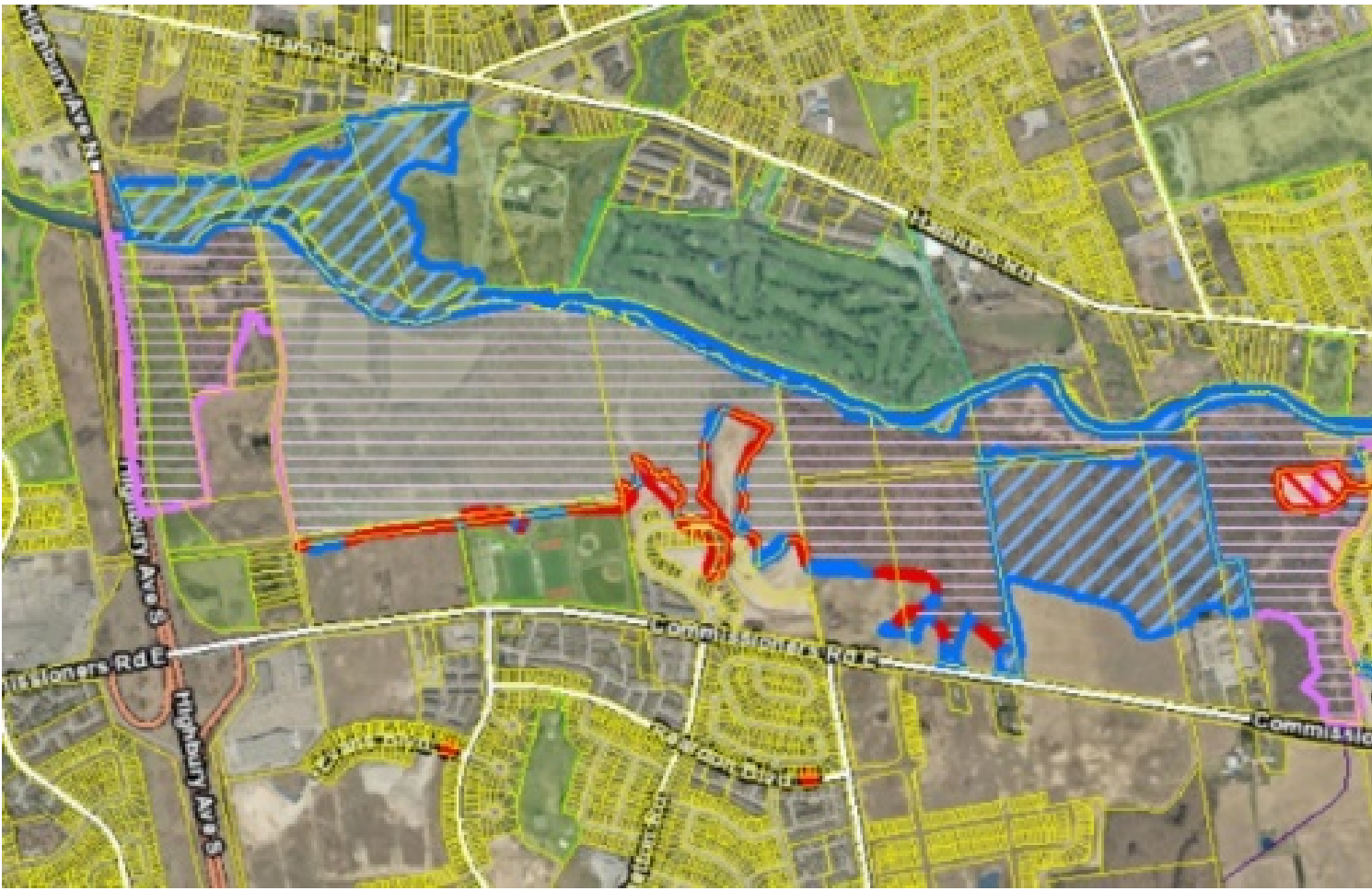
UTRCA; 16090 Robin's Hill Road  
 Removed: Unevaluated Vegetation Patch  
 Added: Significant Woodland

DRAFT



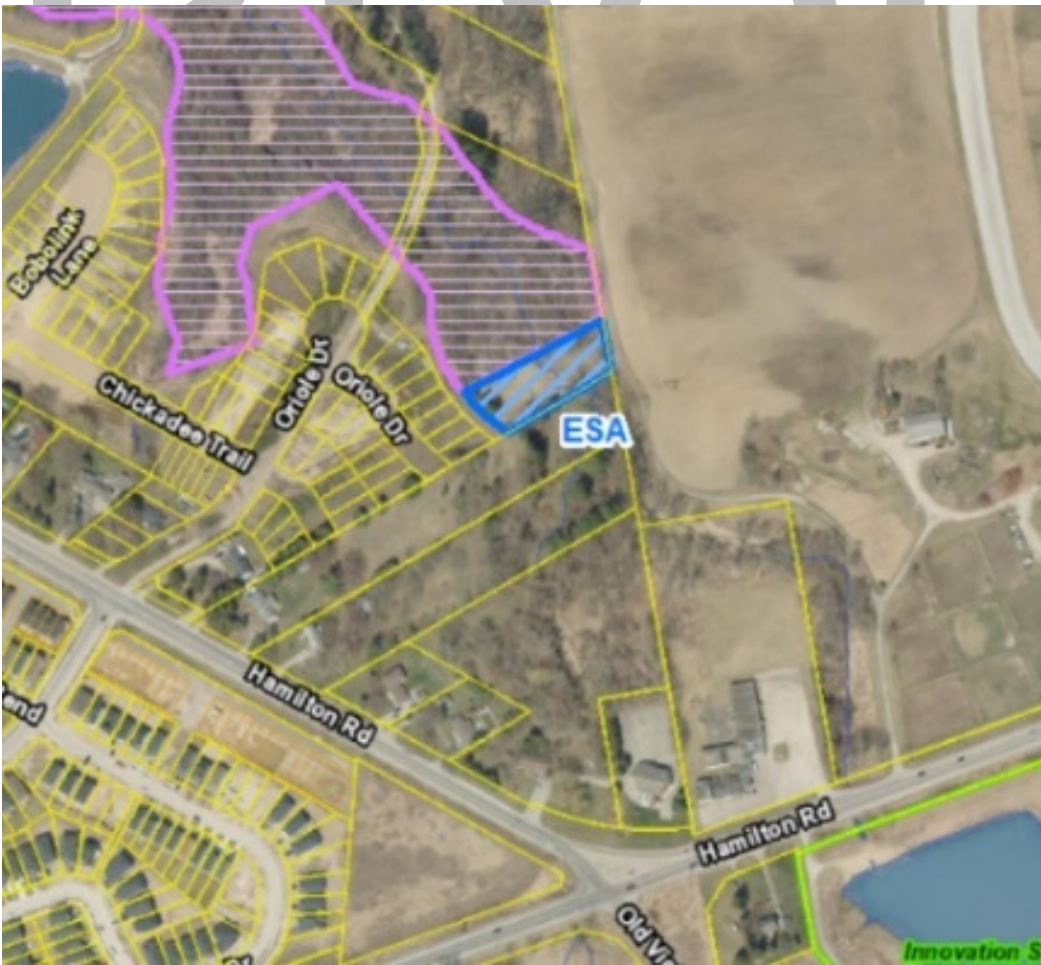
2054 Adelaide Street North; Previous Application: 39T-11502  
 Removed: Potential ESA  
 Added: Significant Woodland





Several Addresses on Norlan Ave, Meadowlily Rd North, Meadowlily Rd South, Meadowlark Ridge, and Commissioners Road East; Previous Application: 39T00517

- Removed: ESA boundary adjustment to match previous zoning update
- Added: ESA boundary adjustment to match previous zoning update, with significant portions added to the north and east of the current ESA boundary



220 Oriole Lane; Previous Application: 39T-17502

- Added: ESA boundary extended





930 Deveron Crescent; Previous Application: 39CD-23508  
 Added: Significant Woodlands

DRAFT



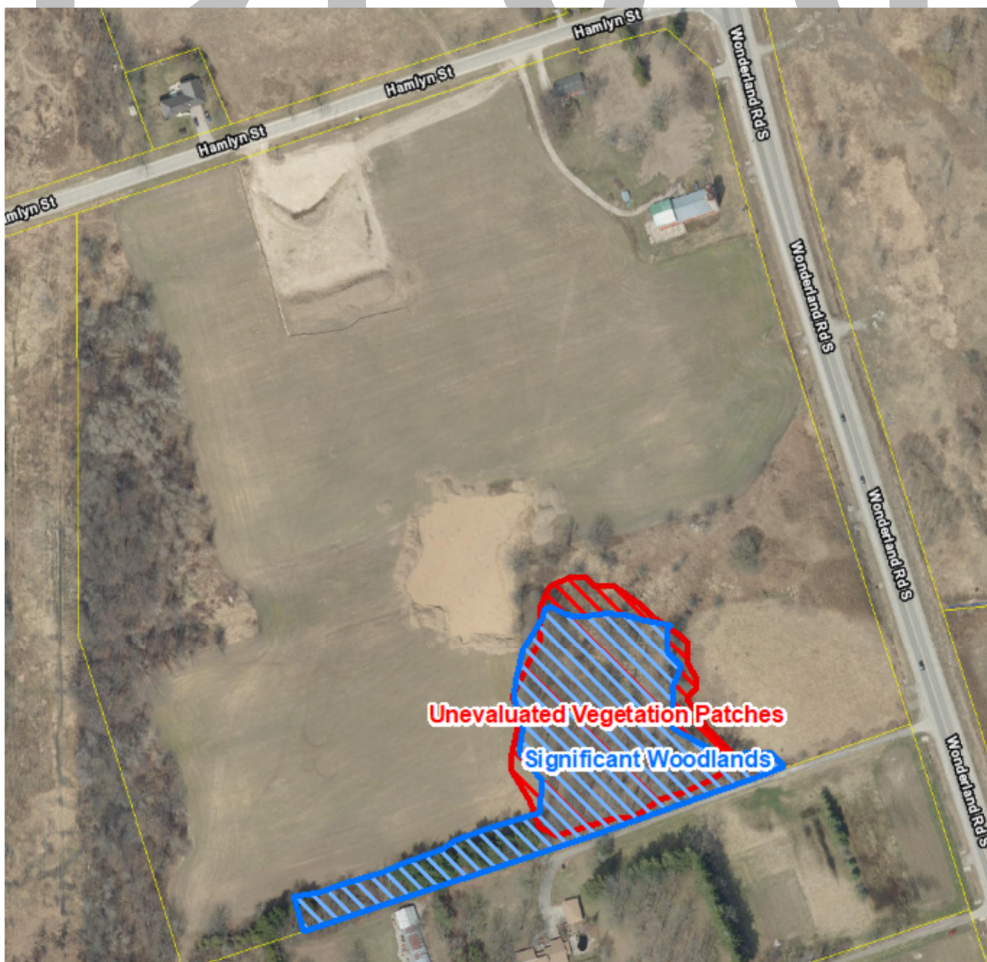
2076 – 2124 Evan Boulevard; Previous Application: 39T-92020E  
 Removed: Potential ESA  
 Added: ESA boundary adjustment





City of London; 1577 Wilton Grove Road  
 Added: Wetland

DRAFT



6019 Hamlyn Street; Previous Application: 39T-18504  
 Removed: Unevaluated Vegetation Patches  
 Added: Significant Woodlands





6019 Hamlyn Street; Previous Application: 39T-18504

Removed: Unevaluated Wetlands

Added: Wetlands

DRAFT



6019 Hamlyn Street; Previous Application: 39T-18504

Removed: Potential ESA

Added: ESA





3924 and 4138 Colonel Talbot Road; Previous Application: 39T-12503

Removed: Unevaluated Wetlands

Added: Significant Woodland

DRAFT



325 Middleton Avenue; Previous Application: Z-8470

Added: Wetlands



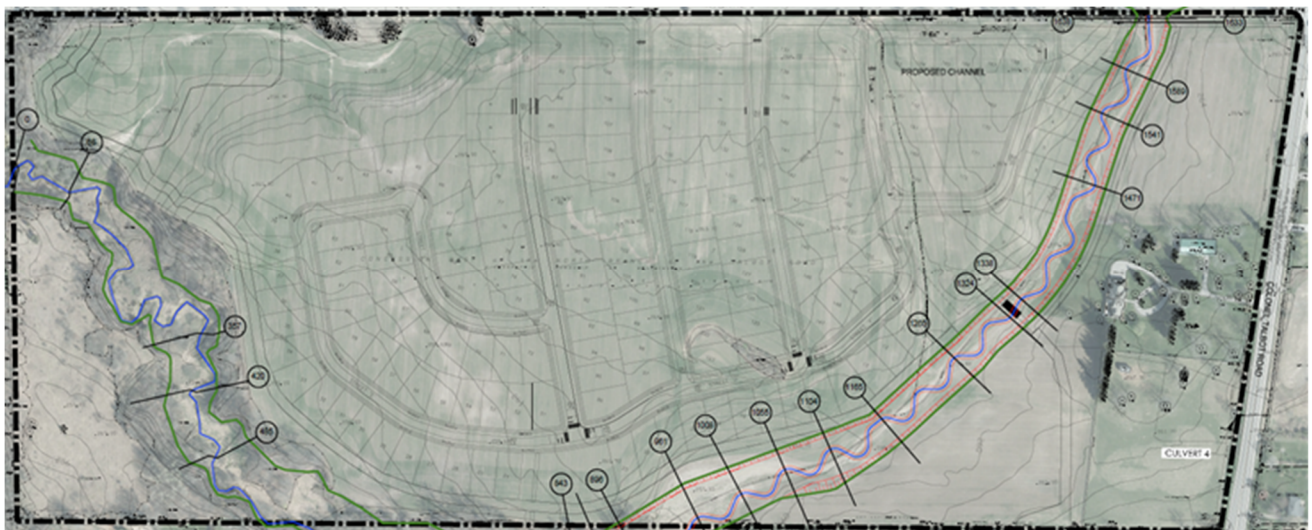


7313-7415 Silver Creek Crescent ; Previous Application: 39T-14504

Removed: Eastern ESA

Added: Western ESA

DRAFT



7395 Silver Creek Cres

Previous Application: 39T-14504

Added: Floodplain (Green Line)





3514 Bostwick Road; Previous Application: 39T-14506  
 Removed: Unevaluated Vegetation Patch  
 Added: Significant Woodland



3105 Bostwick Road; Previous Application: 39T-14506  
 Removed: Unevaluated Vegetation Patches  
 Added: Significant Woodlands





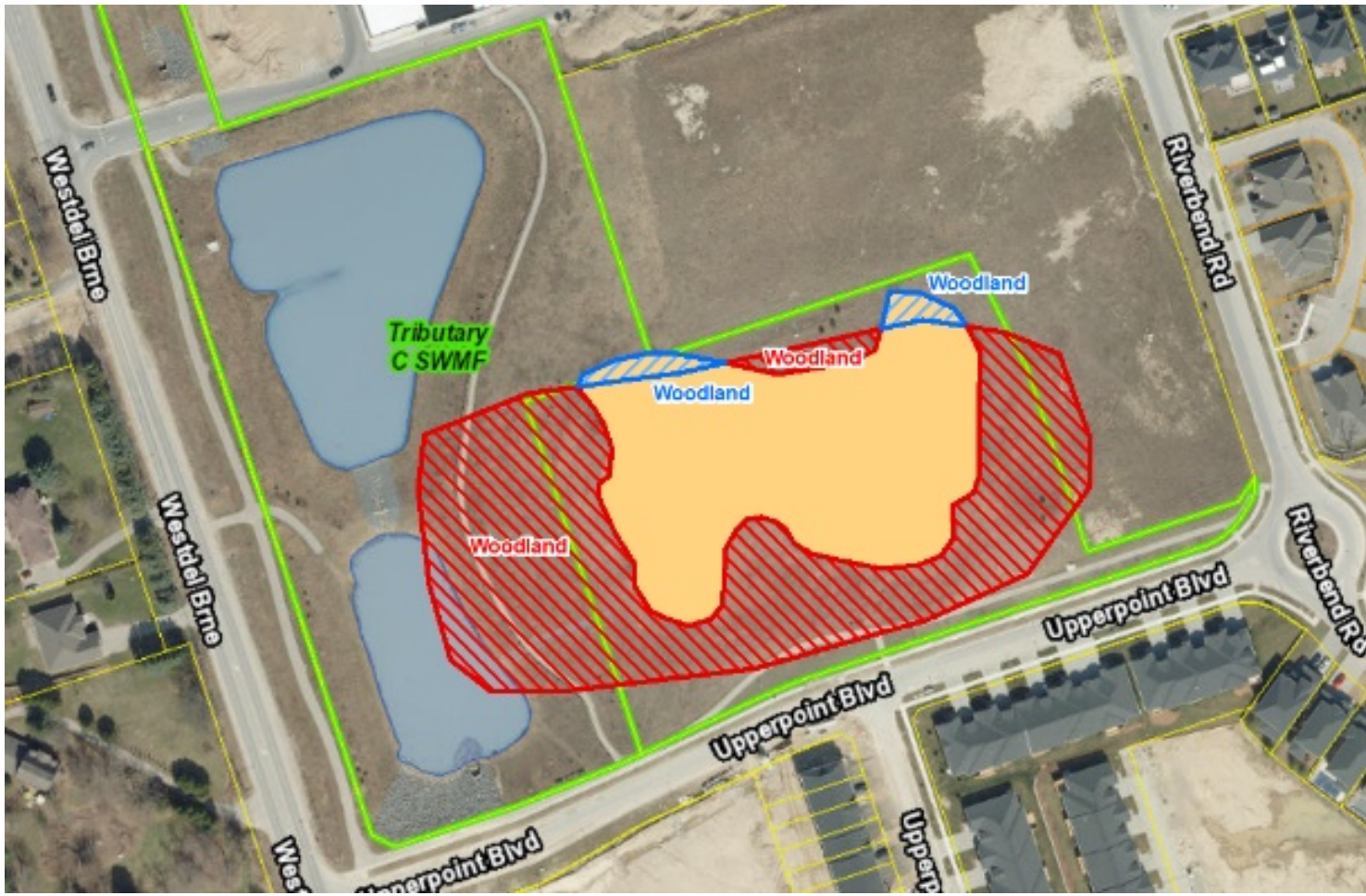
3105 Bostwick Road; Previous Application: 39T-14506  
Removed: Unevaluated Wetlands  
Added: Unevaluated Wetlands

DRAFT



3263 Wonderland Road South; No Previous Application Number Found  
Removed: Unevaluated Wetland





2080 Upperpoint Boulevard; Previous Application: 39T-14505

Removed: Woodland  
 Added: Woodland

DRAFT



1590 Woodcock Place; Previous Application: 39T-78066

Removed: Unevaluated Vegetation Patches





401 Sunningdale Road West; Previous Application: 39T-16504  
 Removed: Unevaluated Vegetation Patches  
 Added: Significant Woodlands

DRAFT



401 Sunningdale Road West; Previous Application: 39T-16504  
 Removed: Unevaluated Wetland  
 Added: Wetlands





2300-2310 Richmond Street; No Application Number Found  
 Added: Significant Woodlands

DRAFT



1782 Kilally Road; Previous Application: 39T-055505  
 Removed: Portions of ESA boundary  
 Added: Portions of ESA boundary





City of London, UTRCA; 1424 Clarke Rd & 2204 Huron St  
 Removed: Unevaluated Vegetation Patch  
 Added: Significant Woodland

DRAFT



City of London, UTRCA; 1424 Clarke Rd & 2204 Huron St  
 Removed: Unevaluated Wetlands  
 Added: Wetlands









7109-7161 Westminster Drive; No Previous Application Number Found  
 Removed: Unevaluated Wetland  
 Added: Wetland

DRAFT



7161 Westminster Drive; No Previous Application Number Found  
 Added: Significant Woodlands





3901, 3982 West Graham Place  
7053, 7197 Clayton Walk  
3700 Colonel Talbot Rd  
Previous Application: 39T-00510  
Added: Floodplain

DRAFT