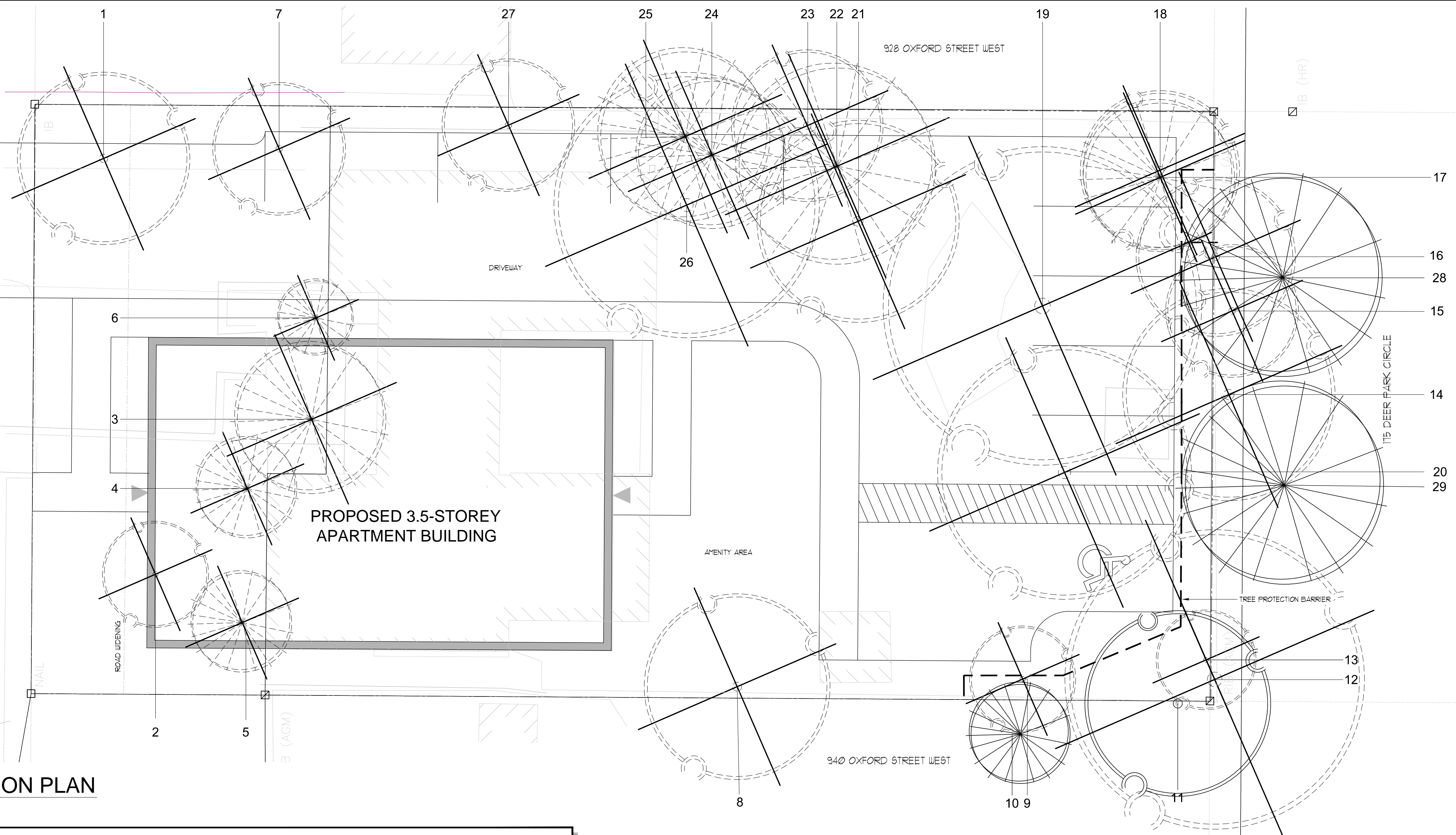


OXFORD STREET



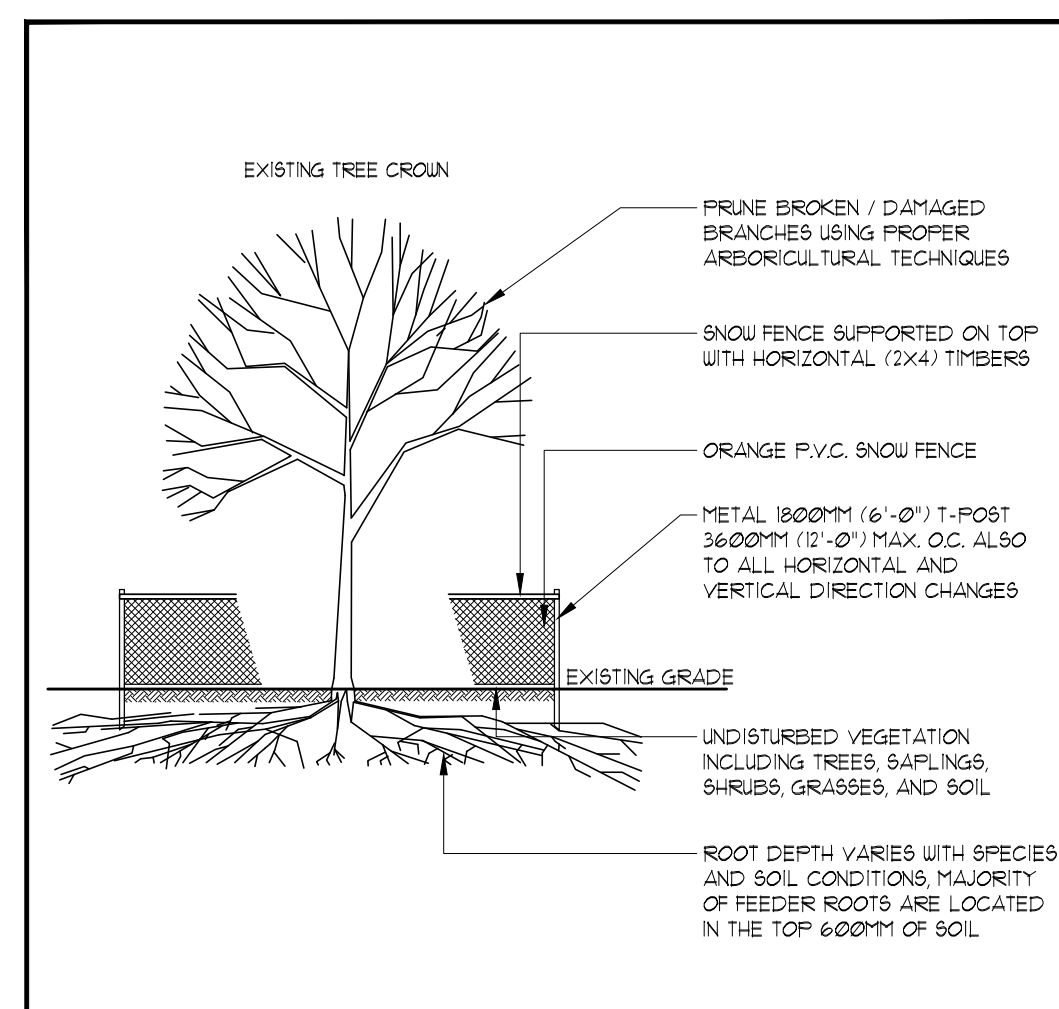
TREE PRESERVATION PLAN
SCALE = 1:100

TREES TO BE REMOVED

GENERAL INFORMATION			SIZE		HEALTH & CONDITION			RECOMMENDATIONS				
ID #	BOTANICAL NAME	COMMON NAME	LOCATION	DBH (mm)	CANOPY RADIUS (m)	DOMINATION	STRUCTURAL FORM	STRUCTURAL INTEGRITY	COMMENTS	EXPECTED CONSTRUCTION IMPACTS	PRESERVE OR REMOVE	IMPACT MITIGATION OR REMOVAL RATIONALE
1	<i>Rubus cuneifolius</i>	Black Locust	Subject site	46.32/8	3	5	Fair	Fair	Multi-stem 3, primary union at grade, minor dead branches	Direct conflict with entrance	Remove	
2	<i>Genus canadense</i>	Eastern Redbud	Subject site	35.10/5.2	2	4	Fair	Good	Multi-stem 4, primary union at grade, minor dead branches	Direct conflict with building	Remove	
3	<i>Thuja</i> spp.	Cedar	Subject site	20.75, 14.16/8	3	5	Fair	Fair	Multi-stem 5, primary union at grade	Direct conflict with building	Remove	
4	<i>Thuja</i> spp.	Cedar	Subject site	12.9	2	4	Fair	Fair	Multi-stem 3, primary union at grade, tied to house	Direct conflict with building	Remove	
5	<i>Thuja</i> spp.	Cedar	Subject site	14.7, 5.5	2	3	Fair	Fair	Multi-stem 4, primary union at grade, leans east	Direct conflict with building	Remove	
6	<i>Picea glauca</i>	Alberta Spruce	Subject site	16	1.5	4	Fair	Fair	Dead canopy with trunk grown at the house foundation	Direct conflict with building	Remove	
7	<i>Fraxinus</i> spp.	Ash	Subject site	16	3	5	Fair	Good		Direct conflict with entrance	Remove	
8	<i>Prunus serotina</i>	Black Cherry	Subject site	-35	3.5	2	Poor	Poor	Trunk wounds, vines grown through trunk and into canopy	Minor conflict with proposed building and parking	Remove	Tree in poor condition
9	<i>Acer glaberrimus</i>	Norway Maple	Subject site	11	2	2	Good	Good	Slightly suppressed	Minor conflict with proposed parking	Remove	NA
12	<i>Galls occidentales</i>	Rackberry	Boundary Subject site 175 Deer Park Circle	-45	6	5	Fair	Fair	Grinding roots, minor dead wood, fence grown	Minor conflict with proposed parking	Remove	Tree in poor condition, consent from 175 Deer Park Circle required for removal
13	<i>Rhamnus cathartica</i>	Buckthorn	Subject site	13, 12, 10, 6, 5	2	2	Poor	Poor	Multi-stem 5, multiple dead branches and vines covering majority of canopy	Conflict with parking	Remove	Invasive species, consent from 175 Deer Park Circle required for removal
14	<i>Rhamnus cathartica</i>	Buckthorn	Boundary Subject site 175 Deer Park Circle	25	4	3	Poor	Poor		Conflict with parking	Remove	Invasive species, consent from 175 Deer Park Circle required for removal
15	<i>Rhamnus cathartica</i>	Buckthorn	175 Deer Park Circle	18	3	3	Poor	Poor		Conflict with parking	Remove	Invasive species, consent from 175 Deer Park Circle required for removal
16	<i>Acer saccharum</i>	Sugar Maple	175 Deer Park Circle	26	4	5	Fair	Fair	Growing in fence, suppressed branching, slightly suppressed	Conflict with parking	Remove	Invasive species, consent from 175 Deer Park Circle required for removal
17	<i>Picea</i> spp.	Spruce spp.	Subject site	37	3	2	Poor	Poor	moribund, some canopy at top	Minor conflict with proposed parking	Remove	
18	<i>Acer saccharum</i>	Sugar Maple	Subject site	19	3	5	Fair	Good		Minor conflict with proposed parking	Remove	
19	<i>Calceolaphegosa</i>	Northern Galda	Subject site	51	6	4	Poor	Fair	Gully along trunk, dead branching	Minor conflict with proposed parking	Remove	
20	<i>Juglans nigra</i>	Black Walnut	Subject site	26	5	4	Fair	Good	Deadwood	Minor conflict with proposed parking	Remove	
21	<i>Acer saccharum</i>	Sugar Maple	Subject site	25	4	5	Good	Good		Minor conflict with proposed parking	Remove	
22	<i>Thuja</i> spp.	Cedar	Subject site	38	4	4	Fair	Good	Minor epicormic growth along trunk	Minor conflict with proposed parking	Remove	
23	<i>Rhamnus cathartica</i>	Buckthorn	Subject site	17	3	3	Poor	Poor	Suppressed branching, cavity at base, leans west	Minor conflict with proposed parking	Remove	
24	<i>Thuja</i> spp.	Cedar	Subject site	15	3	2	Fair	Fair	Moribund, vines throughout canopy	Minor conflict with proposed parking	Remove	
25	<i>Thuja</i> spp.	Cedar	Subject site	31	3.5	2	Fair	Fair	Moribund, vines throughout canopy	Minor conflict with proposed parking	Remove	
26	<i>Prunus serotina</i>	Black Cherry	Subject site	47	5	3	Fair	Fair	Minor trunk wounds, dead wood throughout canopy	Minor conflict with proposed parking	Remove	
27	<i>Rubus cuneifolius</i>	Black Locust	Subject site	16	3	5	Fair	Good		Minor conflict with proposed parking	Remove	

TREES TO BE PRESERVED

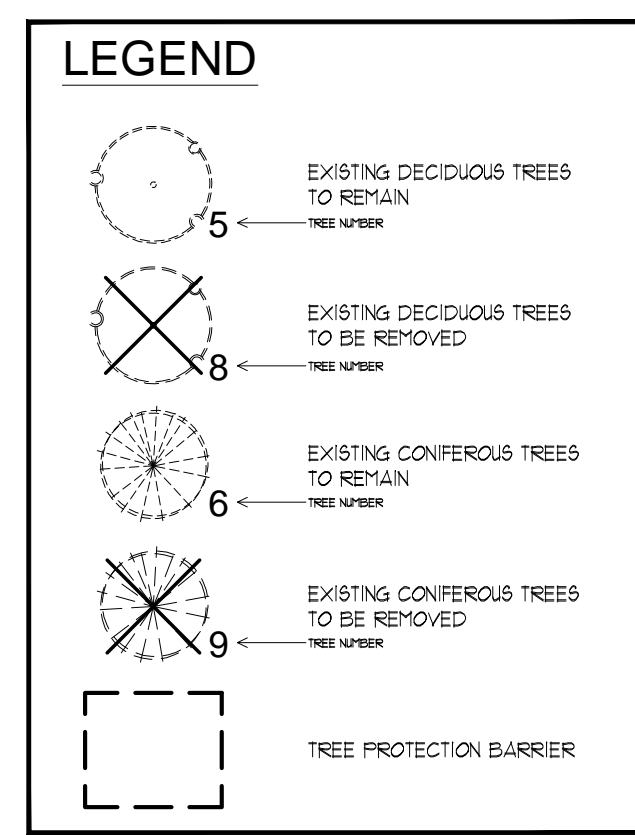
GENERAL INFORMATION			SIZE		HEALTH & CONDITION			RECOMMENDATIONS				
ID #	BOTANICAL NAME	COMMON NAME	LOCATION	DBH (mm)	CANOPY RADIUS (m)	DOMINATION	STRUCTURAL FORM	STRUCTURAL INTEGRITY	COMMENTS	EXPECTED CONSTRUCTION IMPACTS	PRESERVE OR REMOVE	IMPACT MITIGATION OR REMOVAL RATIONALE
10	<i>Picea abies</i>	Norway Spruce	940 Oxford Street West	-15	2	4	Good	Good	Lower suppressed canopy	No conflict	Preserve	TP
11	<i>Ligustrum x intermedia</i>	Hybrid Walnut	Boundary Subject site and 940 Oxford Street West	-18	4	5	Good	Good	crooked leader towards east, lower suppressed branching	No conflict	Preserve	TP
28	<i>Picea abies</i>	Norway Spruce	175 Deer Park Circle	-40	4	4	Good	Good		Critical root zone may be impacted by grading	Preserve	TP
29	<i>Picea abies</i>	Norway Spruce	175 Deer Park Circle	-4	4	4	Good	Good		Critical root zone may be impacted by grading	Preserve	TP



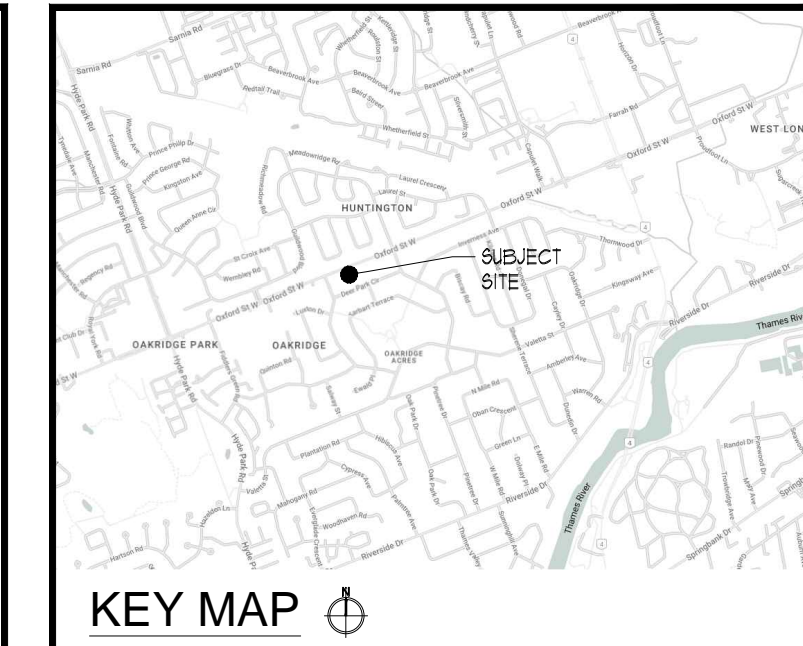
NOTES:

- EXISTING TREES ARE TO BE PROTECTED FROM CONSTRUCTION WITH THE INSTALLATION OF A 1800MM (4'-0") HIGH SNOW FENCE HELD IN PLACE WITH 1800MM (6'-0") T-BARS. THE BARRIER IS TO BE INSTALLED PRIOR TO ANY CONSTRUCTION AND MUST REMAIN IN PLACE UNTIL ALL CONSTRUCTION IS COMPLETED.
- ALL SUPPORTS AND BRACING SHOULD BE INSIDE THE TREE PROTECTION ZONE. ALL SUCH SUPPORTS SHOULD MINIMIZE DAMAGING ROOTS IN THE TREE PROTECTION ZONE.
- NO CONSTRUCTION ACTIVITY, GRADE CHANGES SURFACE TREATMENT, OR EXCAVATION OF ANY KIND IS PERMITTED WITHIN THE TREE PROTECTION ZONE.
- NO MOVEMENT OF EQUIPMENT, STORAGE OF BUILDING SUPPLIES, CLEANING OR EQUIPMENT, OR DUMPING OF SOLVENTS, GASOLINE, ETC. MAY OCCUR WITHIN THIS FENCE LINE.
- WHERE HIGH QUALITY SPECIMENS OCCUR ADJACENT TO AREAS SUBJECTED TO INTENSIVE CONSTRUCTION ACTIVITY, WOODEN CRIBBING SHOULD BE INSTALLED TO PROTECT TRUNKS FROM DAMAGE IN THE EVENT THAT HEAVY EQUIPMENT BREAKS DOWN THE SNOW FENCING. FENCE TO BE INSPECTED BY ENVIRONMENTAL CONSULTANT ON A REGULAR BASIS AND BE MAINTAINED BY THE SUBDIVIDER / BUILDER.

TEMP. TREE PROTECTION BARRIER - N.T.S.



REFER TO TREE ASSESSMENT REPORT FOR CONSTRUCTION IMPACT MITIGATION



KEY MAP



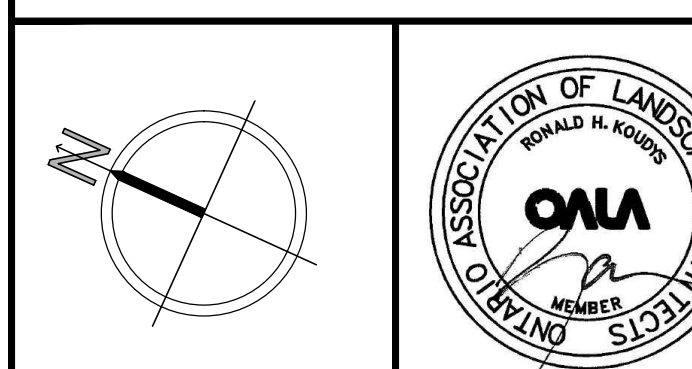
ALL DRAWINGS REMAIN THE PROPERTY OF THE LANDSCAPE ARCHITECT AND SHALL NOT BE REPRODUCED OR REUSED WITHOUT THE LANDSCAPE ARCHITECTS WRITTEN PERMISSION.

THIS DRAWING SHALL NOT BE USED FOR CONSTRUCTION OR TENDER PURPOSES UNLESS SIGNED AND DATED BY RONALD H. KOUKDY'S, O.A.L.A. C.S.L.A. LANDSCAPE ARCHITECT, LONDON, ONTARIO (519) 667-3322.

Ronald H. Koukdy's, O.A.L.A. C.S.L.A. DATE

DATE	DESCRIPTION	No.
2023-09-21	ISSUED FOR ZBA	2
2023-09-05	ISSUED FOR REVIEW	1

PLOTTING INFORMATION:
PLOTTED DATE = 2023-09-21
PLOTTED SCALE = 1:1



PROJECT TITLE:
PROPOSED 3.5-STORY BUILDING
934 OXFORD STREET W
LONDON, ONTARIO

DRAWING TITLE:
TREE PRESERVATION PLAN

DATE: AUGUST, 2023 SCALE: AS NOTED DRAWING No. T-1

DRAWN: RKL/Inc. CHECKED BY: RUK.

PROJECT No. 23-160Lc