

## TECHNICAL AND ECONOMICAL INDEX

BUILDING #1		BUILDING #6	
G.F.A		G.F.A / UNIT	162 M <sup>2</sup>
TOTAL :	25,920M <sup>2</sup>	TOTAL :	3,888M <sup>2</sup>
OFFICE :	4,099.5M <sup>2</sup>	#UNITS :	24.0
RESIDENTIAL :	17,456.4M <sup>2</sup>		
#UNITS :	204		
BUILDING #2		BUILDING #7	
G.F.A		G.F.A	
TOTAL :	23404M <sup>2</sup>	TOTAL :	4,593 M <sup>2</sup>
OFFICE :	1925.5M <sup>2</sup>	COMMERCIAL:	1,041M <sup>2</sup>
RESIDENTIAL :	17,182.8M <sup>2</sup>	RESIDENTIAL :	3,552M <sup>2</sup>
#UNITS :	201	#UNITS :	48
BUILDING #3		BUILDING #8	
G.F.A		G.F.A	
TOTAL :	25,959M <sup>2</sup>	TOTAL :	13,802 M <sup>2</sup>
OFFICE :	3,573.80 M <sup>2</sup>	COMMERCIAL:	1,911M <sup>2</sup>
RESIDENTIAL :	23,568.64 M <sup>2</sup>	RESIDENTIAL :	11,891M <sup>2</sup>
#UNITS :	275	#UNITS :	148
BUILDING #4		BUILDING #9	
G.F.A		G.F.A	
TOTAL :	11,286.2M <sup>2</sup>	TOTAL :	4,829 M <sup>2</sup>
OFFICE :	1,647.2 M <sup>2</sup>	COMMERCIAL:	671M <sup>2</sup>
RESIDENTIAL :	7,711.2 M <sup>2</sup>	RESIDENTIAL :	4,158M <sup>2</sup>
#UNITS :	90	#UNITS :	52.0
BUILDING #5		BUILDING #10	
G.F.A		G.F.A	
TOTAL :	15,737.1M <sup>2</sup>	TOTAL :	5,983M <sup>2</sup>
OFFICE :	3,311.9 M <sup>2</sup>	COMMERCIAL:	1,223M <sup>2</sup>
RESIDENTIAL :	8,868.48 M <sup>2</sup>	RESIDENTIAL :	4,760M <sup>2</sup>
#UNITS :	104	#UNITS :	59.0

WESTMOUNT DEVELOPMENT



**Southwest**



# WOODCREST BLVD & VISCOUNT RD



**WESTMOUNT MALL DEVELOPMENT**

London, ON

London, Ontario

McCor Management (East) Inc.

06/30/22



# VISCOUNT RD WEST & WONDERLAND RD



WESTMOUNT MALL DEVELOPMENT

London, ON

London, Ontario

McCor Management (East) Inc.

06/30/22



**Northwest**



# VISCOUNT RD WEST & WONDERLAND RD



**WESTMOUNT MALL DEVELOPMENT**

London, ON

London, Ontario

McCor Management (East) Inc.

03/23/2023



Northeast



# WONDERLAND RD & VISCOUNT RD



WESTMOUNT MALL DEVELOPMENT

London, ON

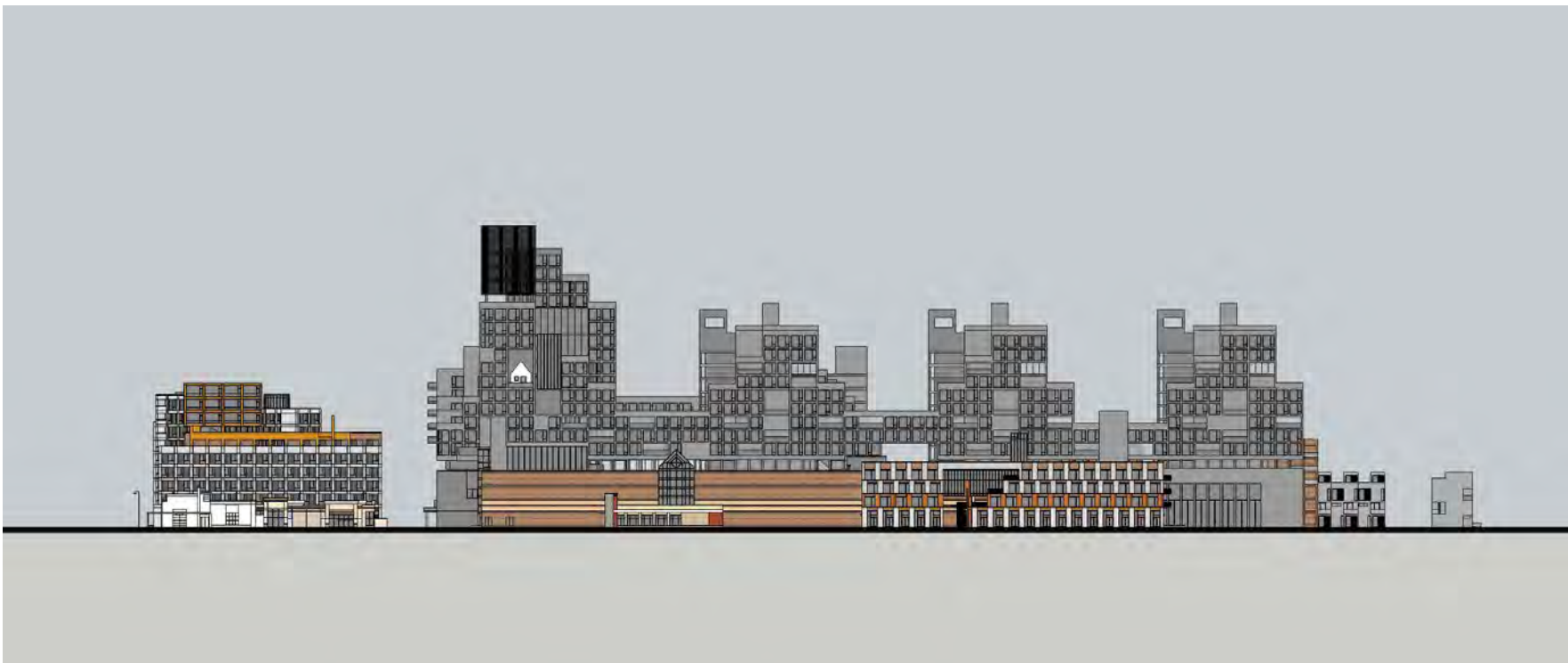
London, Ontario

McCor Management (East) Inc.

06/30/22



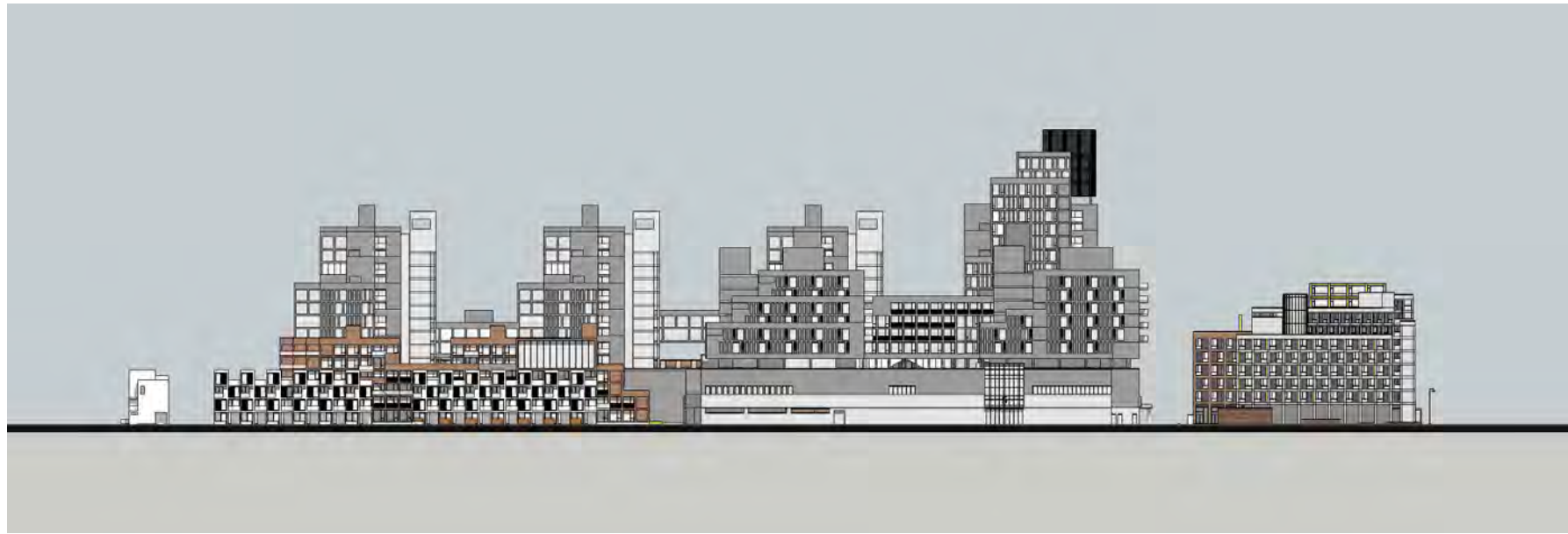
**South Elevation - Viscount Road**



**East Elevation - Wonderland Road**



**Southeast Bird's Eye View**



**West Elevation - Woodcrest Boulevard**



**Northwest Bird's Eye View**



**North Elevation - Village Green Road**





**6 & 8 Storey Apartment - Viscount Rd.**



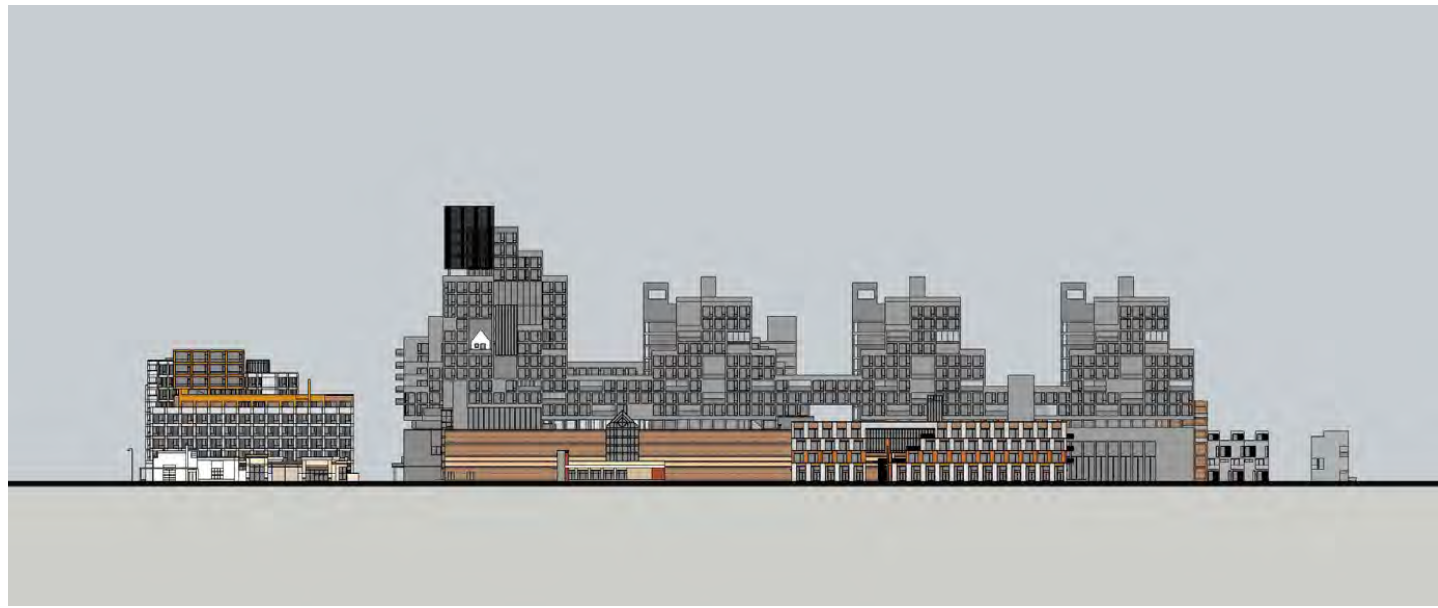
**6 and 8 Storey Apartment - Viscount Rd.**



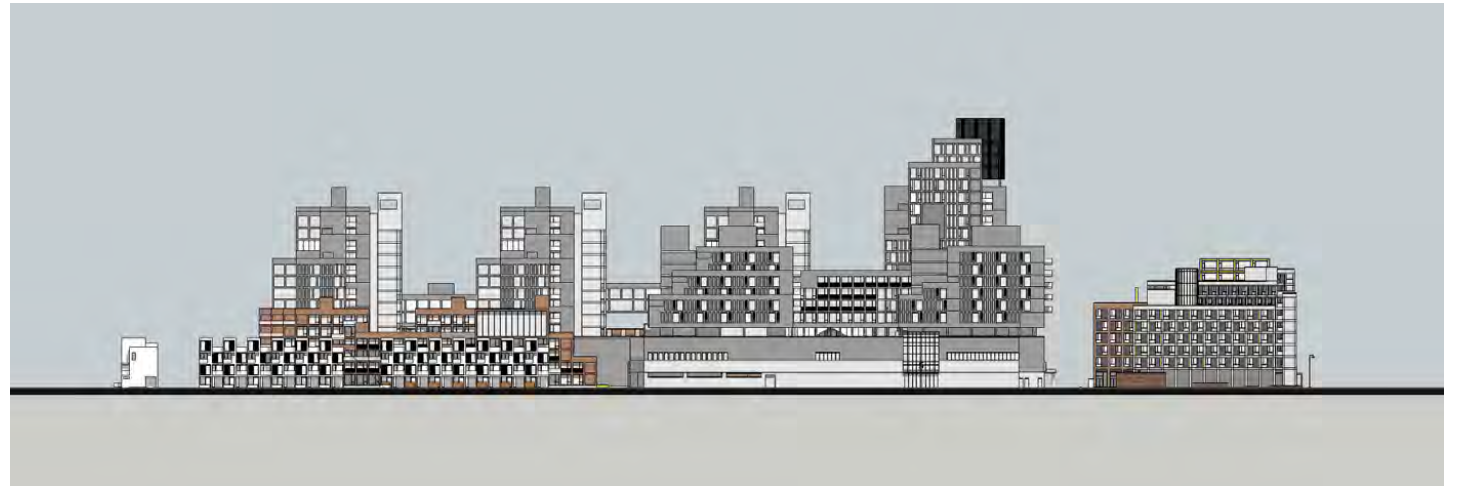
**10 Storey Apartment - Viscount Rd.**



**4 Storey Apartment - Wonderland Rd.**



**Wonderland Road**



**Woodcrest Boulevard**



**Village Green Road**



**Viscount Road**