

# CityGreen



London  
CANADA



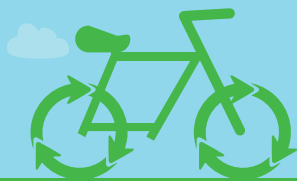
HELPING YOU MAKE GREENER CHOICES

JULY/AUGUST 2020

## Bicycle ReCycle Zone

Drop off your **spare usable bikes** and accessories at EnviroDepots this summer.

This free-of-charge service supports the Big Bike Giveaway and Squeaky Wheel Bike Co-Op, who repair bikes and give them away for free to those in need.



[london.ca/EnviroDepots](http://london.ca/EnviroDepots)



28 Clarke Rd.



3502 Manning Dr.



1450 Oxford St. W



21462 Clarke Rd.



Starting **July 1st, 2020**

Londoners can register online for a bicycle at [www.BigBikeGiveaway.ca](http://www.BigBikeGiveaway.ca)



[f @BigBikeGiveaway](https://www.facebook.com/BigBikeGiveaway)

[f @squeakywheelbike](https://www.facebook.com/squeakywheelbike)



Go Wild Grow Wild goes **virtual** in 2020

WORKSHOPS  
AND  
WILDLIFE

SPONSORS  
AND  
EXHIBITORS

GREEN  
MARKET

WILD CHILD  
PASSPORT

CLIMATE-SMART  
HOME AND YARD PASSPORT

### My Wild Green Home

is a new interactive platform to connect green, active people, groups and businesses in London.

Learn from local businesses and organizations on how to build sustainable and more energy efficient homes and communities.

[GoWildGrowWild.ca](http://GoWildGrowWild.ca)

[t #gowildgrowwild](https://www.tumblr.com/#!/gowildgrowwild)

[f gowildgrowwild](https://www.facebook.com/gowildgrowwild)

[i @gowildgrowwild](https://www.instagram.com/gowildgrowwild)

Brought to you by:



Visit [www.london.ca](http://www.london.ca) for more information on environmental projects and programs.



[www.london.ca/citygreen](http://www.london.ca/citygreen) | 519-661-CITY (2489)

Send us your ideas on other topics you would like to see in CityGreen by emailing suggestions to: [ecotips@london.ca](mailto:ecotips@london.ca)

# Installing a pool this summer?

Help prevent issues down the road.  
Know where your water flows.



## Lot Grading

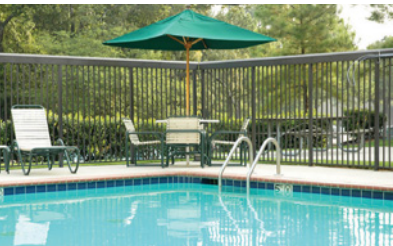
Changing your lot grading can cause potential yard and basement flooding, and may put you at legal risk if you impact neighbouring properties. Contact the City's Geomatics Division to verify your lot grading before installing a pool.

519-661-4908 | [geomatics@london.ca](mailto:geomatics@london.ca)



## Side and Rear-yard Swales

Swales are gentle slopes designed on your property to help stormwater drain away. Filling in or covering swales with concrete or cement can obstruct water from flowing off of your property. Make sure your backyard upgrades don't impact how stormwater drains.



## Fences

Pools require a fully enclosed fence with a self-closing and latching gate. A fence permit must be acquired before pool installation under the Swimming Pool Fence By-law PS-5. Contact the City's Zoning Division to apply.

519-930-3510 | [zoning@london.ca](mailto:zoning@london.ca)

## Water Service Area and New Financial Plan

Water conservation

Local water systems

Your water bill

Better understand your water bill, and learn more about water conservation and the City of London's water system. The updated Water Service Area Financial Plan for 2020-2026 is now available to view online.

[www.london.ca/water](http://www.london.ca/water)