



300 Dufferin Avenue
P.O. Box 5035
London, ON
N6A 4L9

London
CANADA

March 10, 2009

Re: Meadowlily Area Planning Study – Draft Terms of Reference - Open House

Further to Municipal Council's resolution on February 23, 2009, the Draft Terms of Reference for the Meadowlily Area study is being circulated for review and comment by City departments, agencies, land owners, community groups and the general public.

Copies of the draft terms of reference are available from the City's website at: <http://www.london.ca/d.aspx?s=/Reference Documents/meadowlily.htm> - Click on "Draft Terms of Reference" to review the report.

We would like to invite you to attend an Open House on **Wednesday, March 25, 2009, at 7pm, City Hall, Board of Control Room, 2nd floor**, where you can speak with staff and offer comments in a less formalized environment. Copies of the report will also be available, as will details on some of the proposed component studies we will be undertaking as a result of the Terms of Reference.

Any comments on the proposed draft Terms of Reference will need to be received by **Friday, April 3, 2009**.

If you would like a hard copy of the report, or would like to provide comments on the proposed draft terms of reference, please call Nancy Pasato at 519-661-4980, or e-mail at npasato@london.ca

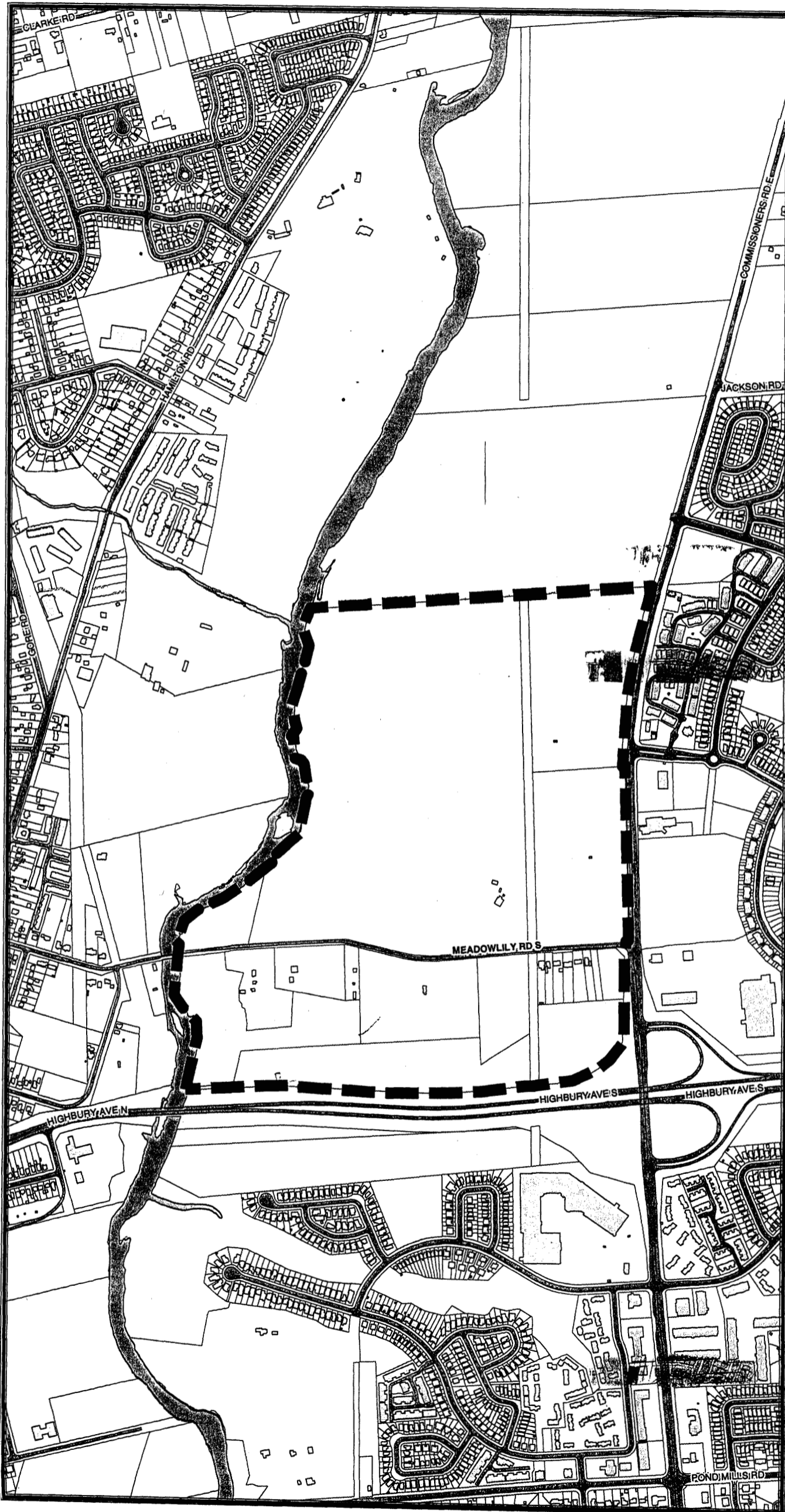
The formal Planning Committee meeting is tentatively scheduled for May 6, 2009. You will receive another notice inviting you to attend this meeting sometime in April.

Yours truly,

N. Pasato, MCIP, RPP
Planner II – Implementation

The Corporation of the City of London
Office: 519-661-4980
Direct Line: 519-661-2500 ext. 4586
Fax: 519-661-5397
npasato@london.ca
www.london.ca

DISCLAIMER: A reasonable effort has been made to ensure that the information in this letter is correct. The opinions in this letter reflect the writer's interpretation of the information provided. Any opinion set forth in this letter may be changed at anytime during the review process. Only the final report to Planning Committee reflects the position of the Planning and Development Department. The Corporation of the City of London accepts no liability arising from any errors or omissions. Every Applicant should consider seeking independent planning advice.



Meadowlily Area Study
MAP NO. 1
- Preliminary Study Map -



Possible Meadowlily Area Study Boundary



Date Prepared: December 1, 2008
 PROJECT LOCATION: ... \planning\projects\p_areas\studied
 MeadowlilyAreaStudy\project\meadowlily_location_map.mxd