



London
CANADA

300 Dufferin Avenue
P.O. Box 5035
London, ON
N6A 4L9

O-7614/Meadowlily Area Plan
N. Pasato
Tel: 661-4980
Fax: 661-5397
Email: npasato@london.ca
Website: www.london.ca

January 29, 2009

DRAFT TERMS OF REFERENCE MEADOWLILY AREA PLANNING STUDY

APPLICANT:

City of London

PROPOSED LOCATION:

Highbury Avenue to City-Wide Sports Park, and the Thames River to Commissioners Road (please see attached map)

As per Council's direction resulting from the Planning Committee meeting of September 30, 2008, the Planning Division is undertaking to prepare a draft Terms of Reference for the Meadowlily Area.

PURPOSE AND EFFECT:

The purpose and effect of the proposed Terms of Reference is to set the parameters for the City-initiated area study. It will identify component studies that need to be completed, necessary background for the preparation of land use concepts and strategies for servicing, development phasing and natural heritage protection and identify timelines and opportunities for public consultation and input.

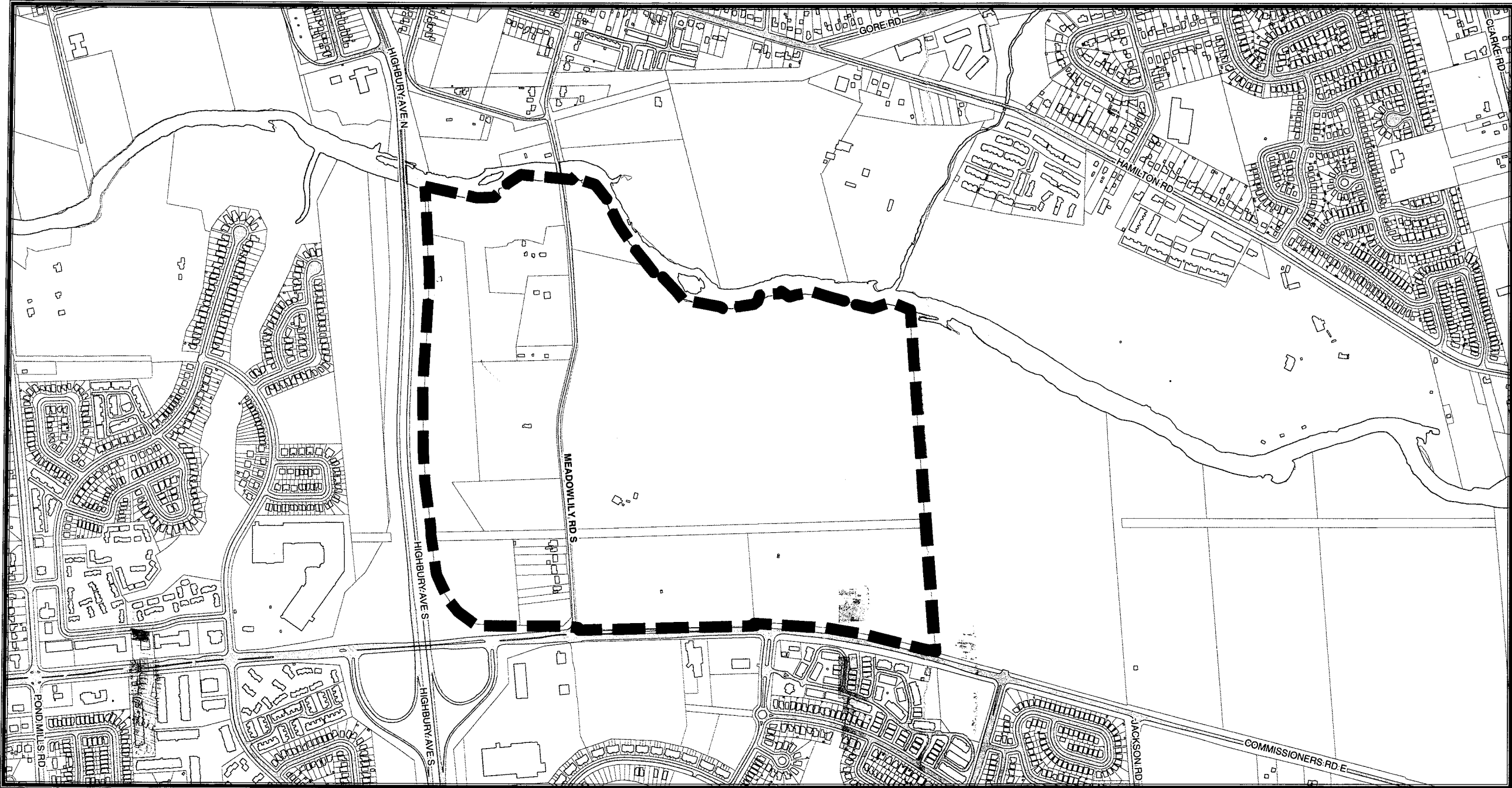
The Meadowlily Area Study is a City-initiated area planning study that will provide a comprehensive assessment of the opportunities and constraints for planning and development within this area. The area study will ultimately guide the conservation of natural and built/cultural heritage, the provision of services and will provide a vision and land use designations for future development.

The Planning Division will bring the draft Terms of Reference to Planning Committee on **February 9th, 2009, with a request to circulate to all interested parties.** This is not a public meeting; however Planning Division Staff will give a presentation.

Once feedback has been received through the circulation process for the draft terms of reference, a neighbourhood meeting will be scheduled to solicit further input from interested parties and residents, with a final public meeting to adopt the Terms of Reference at Planning Committee.

FOR MORE INFORMATION:

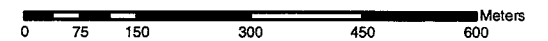
For more information, please call Nancy Pasato at 661-4980, referring to "draft Terms of Reference – Meadowlily Area Planning Study".



Meadowlily Area Study
MAP NO. 1
- Preliminary Study Map -



Possible Meadowlily Area Study Boundary



Date Prepared: December 1, 2008
 PROJECT LOCATION: ...planning\projects\p_areastudies\
 MeadowlilyAreaStudy\projects\meadowlily_location_map.mxd