

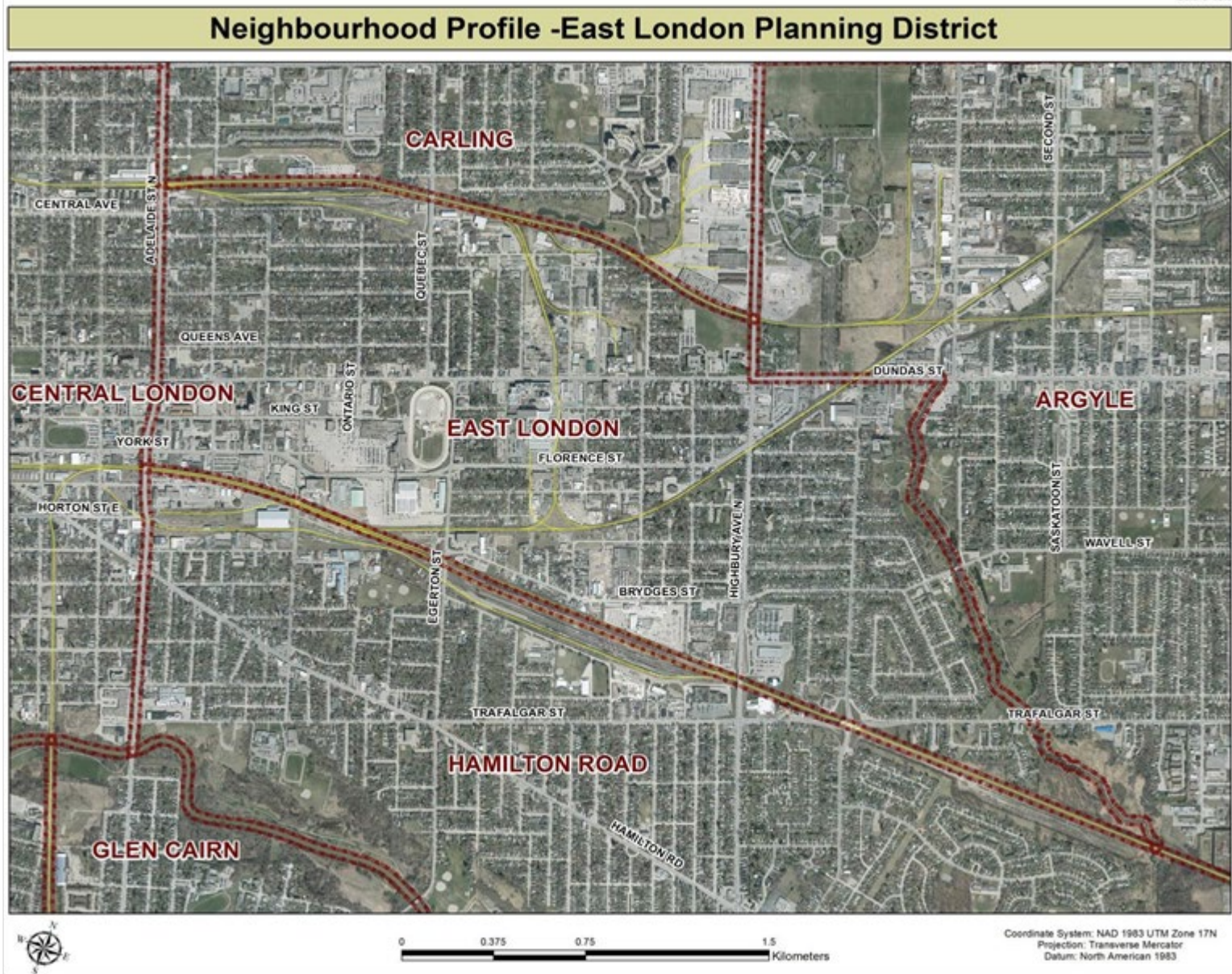


## City of London



## East London Neighbourhood Profile (1996-2016)

**For further information contact:**  
Policy and Planning Support  
Email: [neighbourhoods@london.ca](mailto:neighbourhoods@london.ca)



## Acknowledgment:

Profiles for all 42 neighbourhoods across the city were compiled by the Policy and Planning Division (Dr. Momodou Jeng, Laure Eldik, Randy MacTaggart, and Anna Oliveira). Thank you to Planning Services for providing the 2016 census data that informed the development of this work.

## Cautionary Notes:

- 1. Comparability of Data:** caution should be used when comparing NHS data (2011) to long-form census data (1996, 2001, 2006 and 2016), **especially when it comes to data for small geographies due to a difference in data collection methodologies employed by Statistics Canada.**
- 2. Percentage Totals:** some differences in the percentage totals (not adding up to 100%) are due to rounding and sampling errors, low response rates, and data suppression related to confidentiality rules adopted by Statistics Canada.
- 3. As a % of Neighbourhood/As a % of Active Labour Force:** some differences in percentage totals (not adding up to 100%) are based on the data being compared to the overall population of the neighbourhood or the overall active labour force as opposed to the actual number of respondents to the census question (e.g. population aged 15 years and over).
- 4. Changes from Previous Neighbourhood Profiles:** some revisions and omissions of data in the current Neighbourhood Profiles are based on the way in which data was aggregated by Statistics Canada (e.g. marital status) or questions not asked in the 2016 census (e.g. religion).

### Data Sources:

- 1996, 2001, 2006, 2011 and 2016 Census Data and 2011 NHS data, Statistics Canada, Ottawa.
- Customized City of London Planning District data extracted and tabulated by the City of London Planning – Urban Design and Geographic Information Systems Division and the City of London Policy and Planning Support Division.

## Legend:



is a decrease



means no change



is an increase

N.A. means (Not available)

## Population Characteristics & Age Distribution

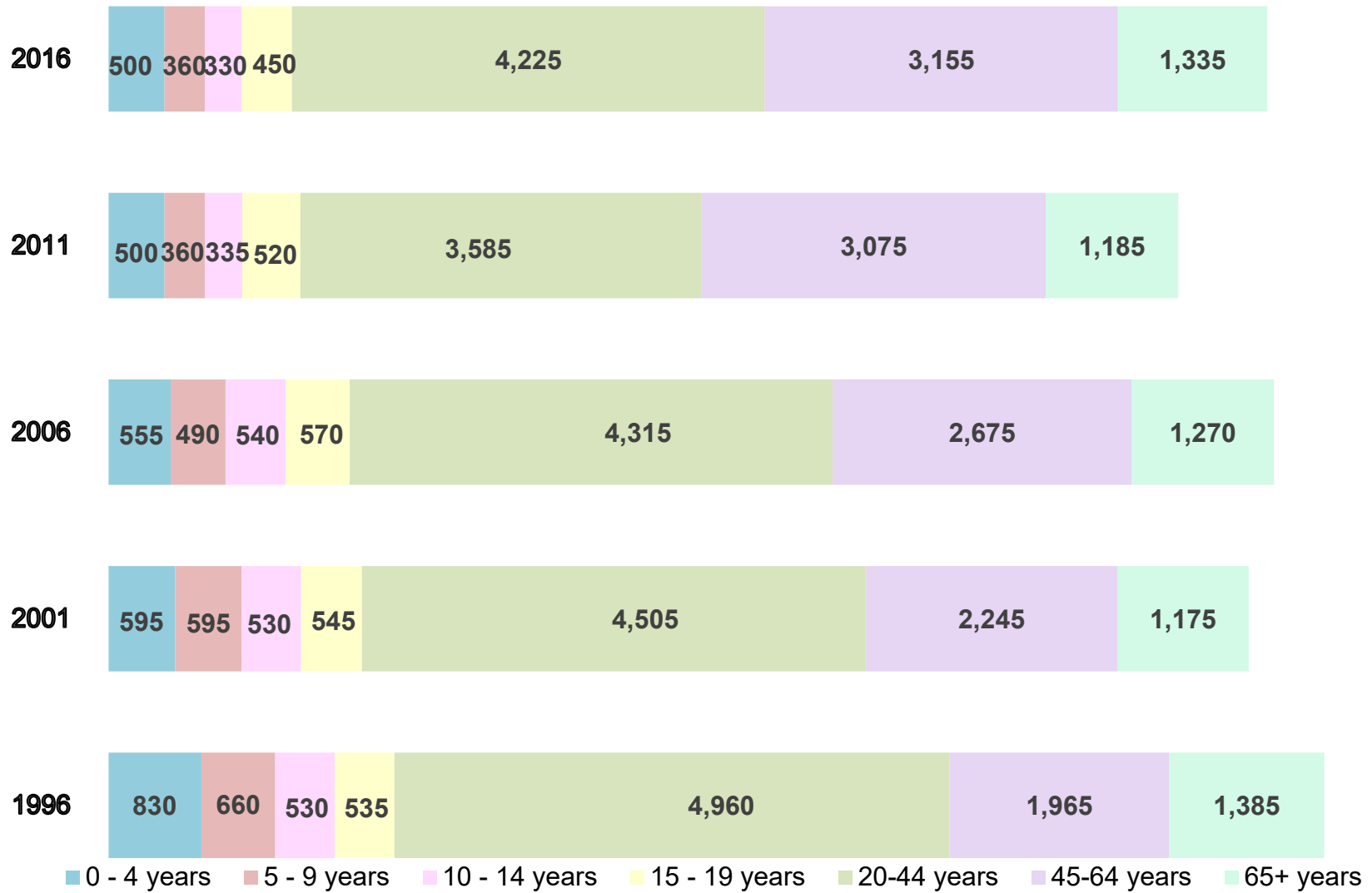
East London Neighbourhood	1996	2001	2006	2011	2016	Change From Previous Period (2011 to 2016)	
<b>Total Population</b>	<b>10,880</b>	<b>10,355</b>	<b>10,405</b>	<b>9,575</b>	<b>10,355</b>	↑	8%
Female	5,395	5,005	5,070	4,615	5,025	↑	9%
Male	5,485	5,350	5,335	4,960	5,335	↑	8%

Age Structure	1996	2001	2006	2011	2016	Change From Previous Period (2011 to 2016)		As a % of Neighbourhood
<b>0 to 19</b>	<b>2,555</b>	<b>2,265</b>	<b>2,155</b>	<b>1,715</b>	<b>1,635</b>	↓	-5%	<b>16%</b>
0 to 4	830	595	555	500	500	—		5%
5 to 9	660	595	490	360	360	—		3%
10 to 14	530	530	540	335	330	↓	-1%	3%
15 to 19	535	545	570	520	450	↓	-13%	4%
<b>20 to 44</b>	<b>4,960</b>	<b>4,505</b>	<b>4,315</b>	<b>3,585</b>	<b>4,225</b>	↑	18%	<b>41%</b>
<b>45 to 64</b>	<b>1,965</b>	<b>2,245</b>	<b>2,675</b>	<b>3,075</b>	<b>3,155</b>	↑	3%	<b>30%</b>
<b>65+</b>	<b>1,385</b>	<b>1,175</b>	<b>1,270</b>	<b>1,185</b>	<b>1,335</b>	↑	13%	<b>13%</b>
<b>Median Age</b>	<b>NA</b>	<b>NA</b>	<b>NA</b>	<b>41.3</b>	<b>39.8</b>			

2016 Census Age Cohort Breakout	Male	Female	Total	As a % of Neighbourhood
0 to 4	260	240	500	5%
5 to 9	200	160	360	3%
10 to 14	125	210	335	3%
15 to 19	240	215	455	4%
20 to 24	380	480	860	8%
25 to 29	565	480	1,045	10%
30 to 34	485	425	910	9%
35 to 39	415	345	760	7%
40 to 44	380	275	655	6%
45 to 49	350	360	710	7%
50 to 54	495	425	920	9%
55 to 59	450	385	835	8%
60 to 64	355	340	695	7%
65 to 69	265	230	495	5%
70 to 74	155	160	315	3%
75 to 79	90	130	220	2%
80 to 84	90	90	180	2%
85+	50	80	130	1%
<b>Total</b>	<b>5,350</b>	<b>5,030</b>	<b>10,380<sup>1</sup></b>	

<sup>1</sup> There is likely to be some differences due to rounding and sampling errors.

### Age Cohort Breakout 1996 - 2016

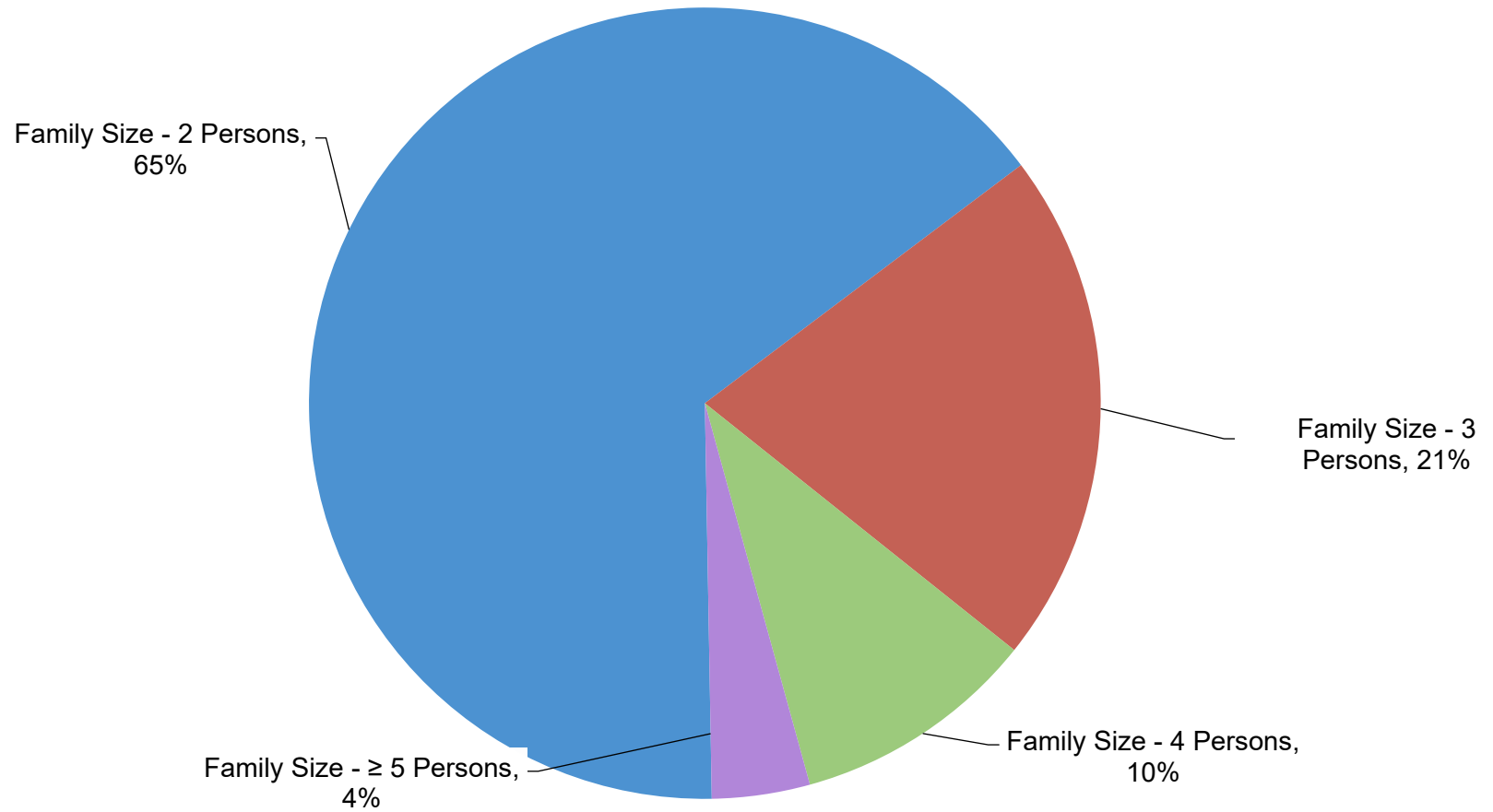


Marital Status	1996	2001	2006	2011	2016	Change From Previous Period(2011 to 2016)		As a % of Neighbourhood
Single	3,105	3,370	3,690	2,810	3,330	↑	19%	32%
Married	3,650	3,265	3,000	2,595	2,565	↓	-1%	25%
Common-Law	860	1,090	1,180	1,245	1,440	↑	16%	14%
Divorced	970	965	1,000	825	945	↑	15%	9%
Separated	500	460	585	460	515	↑	12%	5%
Widowed	630	590	550	440	380	↓	-14%	4%
Citizenship, Immigration & Ethnic Identity	1996	2001	2006	2011	2016	Change From Previous Period (2011 to 2016)		As a % of Neighbourhood
<b>Citizenship</b>								
Canadian Citizens	10,405	10,035	10,100	9,295	9,970	↑	7%	96%
Non-Canadian Citizens	475	320	305	210	390	↑	86%	4%
<b>Immigration Status</b>								
Canadian Born Population	9,150	9,005	8,945	8,200	9,120	↑	11%	88%
Foreign Born Population	1,685	1,300	1,400	1,220	1,120	↓	-8%	11%
Visible Minority Population	700	500	475	690	1,030	↑	49%	10%
Indigenous Identity Population	385	530	325	345	490	↑	42%	5%

Family Composition	1996	2001	2006	2011	2016	Change From Previous Period (2011 to 2016)		As a % of Census Families
<b>Number of Census Families</b>	<b>2,850</b>	<b>2,715</b>	<b>2,745</b>	<b>2,515</b>	<b>2,630</b>	↑	5%	
Family Size - 2 Persons	1,575	1,530	1,575	1,550	1,715	↑	11%	65%
Family Size - 3 Persons	645	575	650	520	545	↑	5%	21%
Family Size - 4 Persons	430	460	350	315	275	↓	-13%	10%
Family Size - ≥ 5 Persons	205	150	170	120	100	↓	-17%	4%
<b>Census Family - Average Size</b>	<b>3</b>	<b>3</b>	<b>3</b>	<b>2.6</b>	<b>2.6</b>			



### 2016 Family Composition

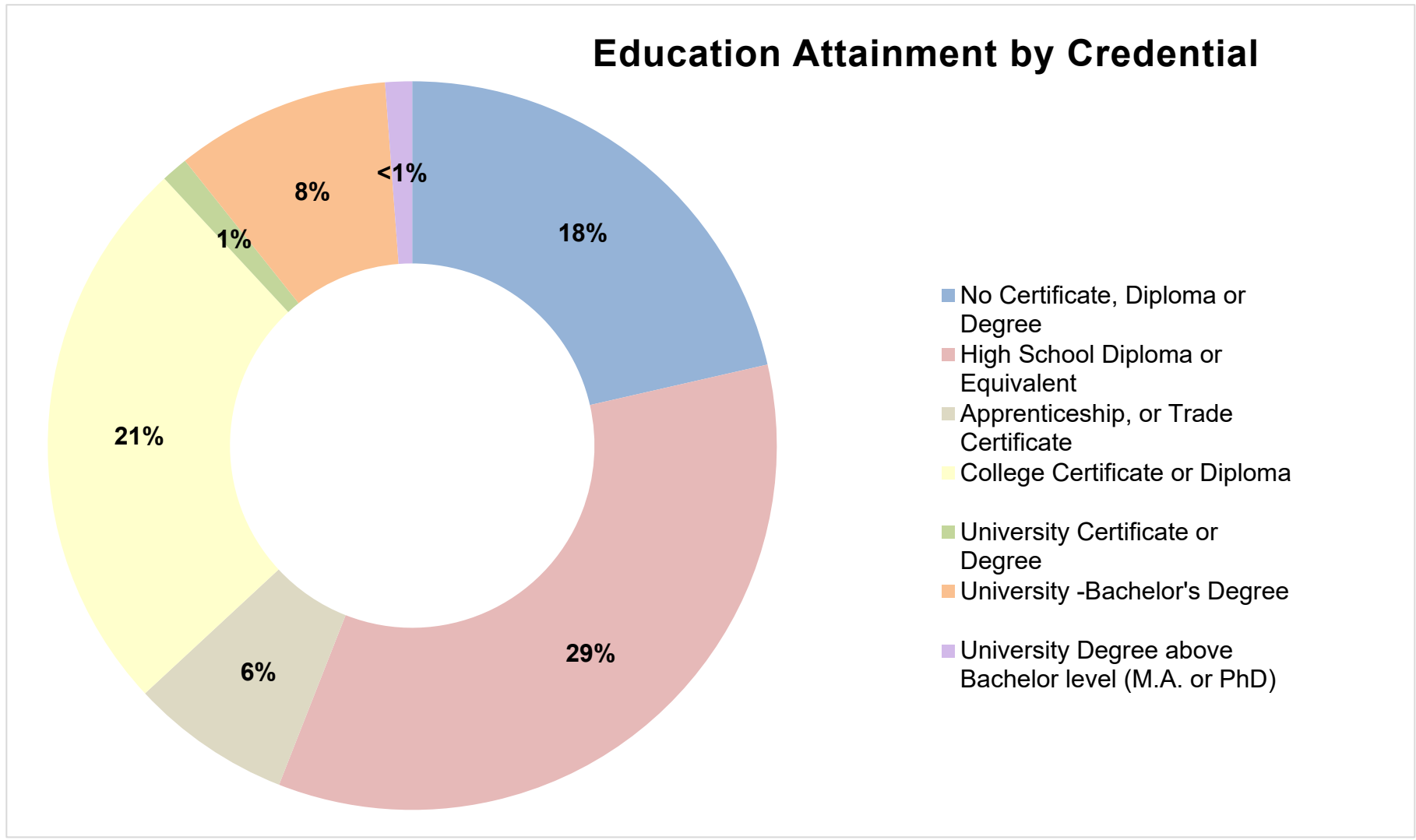


Family Structure & Number of Children	1996	2001	2006	2011	2016	Change From Previous Period (2011 to 2016)	
<b>Couples (Married or Common Law)<sup>2</sup></b>	<b>2,235</b>	<b>2,155</b>	<b>2,080</b>	<b>1,900</b>	<b>1,975</b>	↑	4%
Without Children	1,160	1,150	1,155	1,105	1,225	↑	11%
With Children	1,060	1,005	920	795	745	↓	-6%
<b>Lone Parent Families</b>	<b>620</b>	<b>560</b>	<b>665</b>	<b>615</b>	<b>655</b>	↑	7%
1 Child	410	380	420	455	485	↑	7%
2 Children	160	130	225	120	125	↑	4%
≥ 3 Children	55	45	35	45	50	↑	11%
<b>Male Headed</b>	<b>60</b>	<b>105</b>	<b>175</b>	<b>135</b>	<b>175</b>	↑	30%
<b>Female Headed</b>	<b>560</b>	<b>455</b>	<b>490</b>	<b>480</b>	<b>480</b>	—	

<sup>2</sup> 2016 Census combines data for Married or Common Law couples without/with Children.

Educational Attainment by Credential	1996	2001	2006	2011	2016	Change From Previous Period (2011 to 2016)		As a % of Neighbourhood
No Certificate, Diploma or Degree	N.A.	2,070	2,605	2005	1,895	↓	-5%	18%
High School Diploma or Equivalent	N.A.	N.A.	2,820	2,475	2,955	↑	19%	29%
Apprenticeship, or Trade Certificate	410	1,065	865	855	660	↓	-23%	6%
College Certificate or Diploma	N.A.	1,460	1,695	1,895	2,220	↑	17%	21%
University Certificate or Degree	N.A.	N.A.	N.A.	125	140	↑	12%	1%
University - Bachelor's Degree	N.A.	N.A.	330	455	835	↑	84%	8%
University Degree above bachelor level (MA or PhD)	N.A.	N.A.	165	400	100	↓	-75%	1%

### Education Attainment by Credential

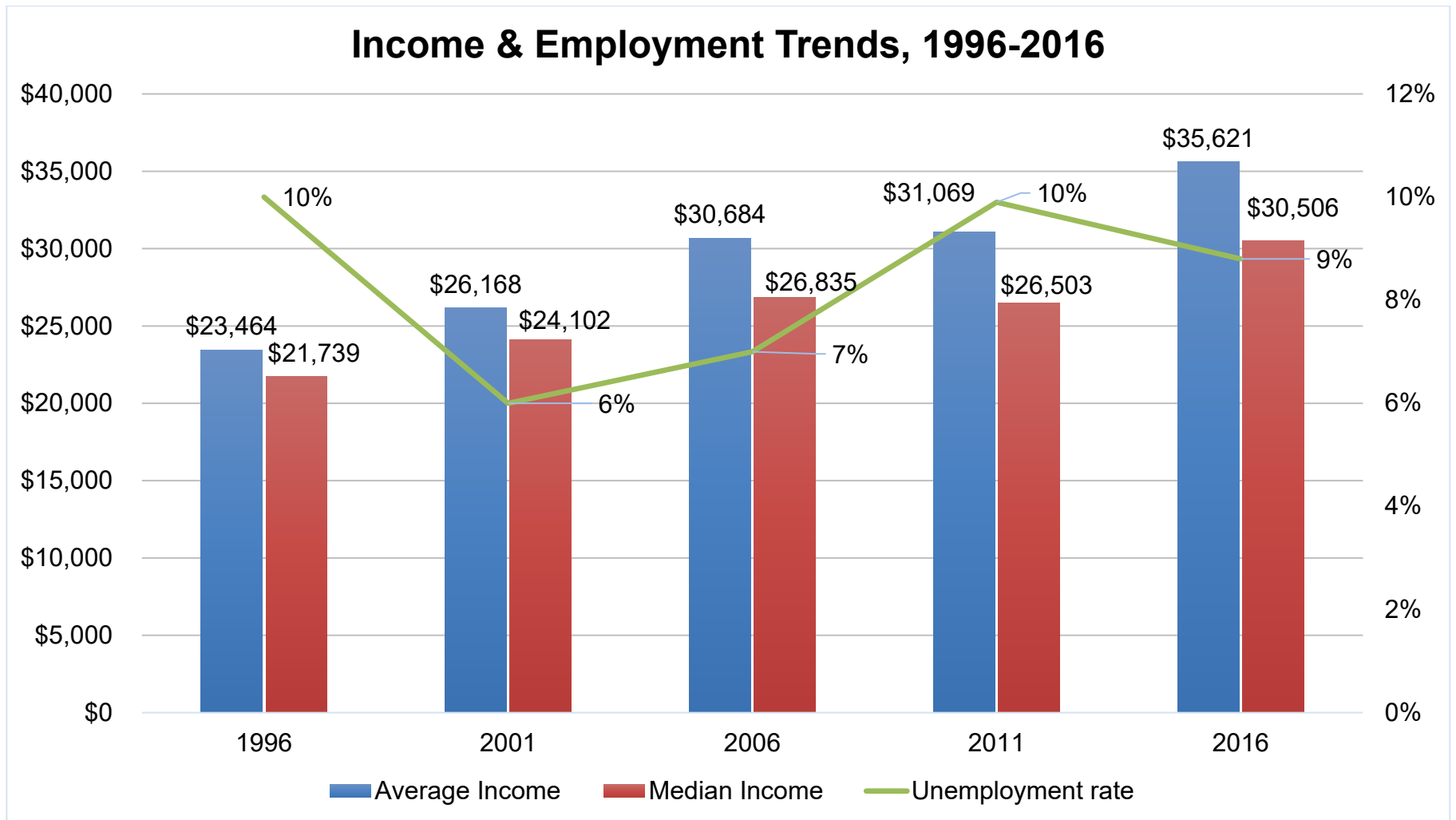


Housing by Structure Type & Tenure	1996	2001	2006	2011	2016	Change From Previous Period (2011 to 2016)		As a % of Total Occupied Dwellings
<b>Total Occupied Dwellings</b>	<b>5,045</b>	<b>5,020</b>	<b>5,070</b>	<b>4,825</b>	<b>5,495</b>	↑	14%	
Single-Detached	2,745	3,255	2,660	2,605	2,585	↓	-1%	47%
Semi-Detached	90	85	105	115	105	↓	-9%	2%
Row House	10	65	115	80	85	↑	6%	2%
Duplex	670	185	600	560	630	↑	13%	11%
Apartment < 5 Storeys	1,295	1,195	1,330	1,245	1,310	↑	5%	24%
Apartment ≥ 5 Storeys	225	195	205	205	760	↑	271%	14%
<b>Number of Owned Dwellings</b>	<b>2,775</b>	<b>2,765</b>	<b>2,980</b>	<b>2,690</b>	<b>2,675</b>	↓	-1%	
Owned as a % of Total	55%	55%	59%	56%	49%	↓		
<b>Number of Rented Dwellings</b>	<b>2,260</b>	<b>2,260</b>	<b>2,085</b>	<b>2,135</b>	<b>2,820</b>	↑	32%	
Rented as a % of Total	45%	45%	41%	44%	51%	↑		
Average # of Rooms	6	6	6	5.8	5.6	↓		
Average Gross Rent	\$520	\$584	\$579	\$640	\$775	↑	21%	
Average Value of Dwelling	\$115,716	\$106,375	\$143,267	\$167,263	\$193,323	↑	16%	

Labour Market Indicators	1996	2001	2006	2011	2016	Change From Previous Period (2011 to 2016)		As a % of Neighbourhood
<b>Total Labour Force ≥ 15 years</b>	<b>5,590</b>	<b>5,845</b>	<b>5,600</b>	<b>5,270</b>	<b>5,885</b>	↑	12%	57%
Female	2,495	2,615	2,505	2,465	2,750	↑	12%	27%
Male	3,095	3,230	3,095	2,790	3,130	↑	12%	30%
<b>Unemployment Rate</b>	<b>14%</b>	<b>10%</b>	<b>10%</b>	<b>9.9%</b>	<b>9.5%</b>	↓		
Female	13%	10%	11%	7.8%	8.2%	↑		
Male	14%	10%	8%	11.6%	10.5%	↓		
<b>Employment Rate</b>	<b>N.A.</b>	<b>N.A.</b>	<b>N.A.</b>	<b>58%</b>	<b>58.1%</b>	↑		
<b>Participation Rate</b>	<b>63%</b>	<b>68%</b>	<b>66%</b>	<b>64%</b>	<b>64.2%</b>	↑		
Female	56%	62%	60%	63%	62.2%	↓		
Male	70%	73%	71%	66%	65.9%	↓		

Income Characteristics of Economically Active Population <sup>3</sup>	1996	2001	2006	2011	2016	Change From Previous Period (2011 to 2016)	
<b>Individual Income</b>							
Average Income	\$20,626	\$23,987	\$27,098	\$34,794	\$32,388	↓	-7%
Median Income	\$17,378	\$19,820	\$22,322	\$24,445	\$26,247	↑	7%
<b>Income by Gender</b>							
Average Income – Male	\$23,291	\$26,098	\$31,492	\$41,125	\$34,425	↓	-16%
Average Income- Female	\$17,962	\$18,539	\$22,398	\$27,652	\$30,188	↑	9%
Median Income – Male	\$20,266	\$23,978	\$28,010	\$27,652	\$28,312	↑	2%
Median Income - Female	\$14,491	\$15,662	\$17,861	\$22,583	\$24,748	↑	10%
<b>Household Income</b>							
Average Household Income	\$34,548	\$37,816	\$45,400	\$56,924	\$52,288	↓	-8%
Median Household Income	\$29,487	\$32,773	\$39,974	\$40,157	\$43,426	↑	8%
<b>Family Income</b>							
Average Family Income	\$41,943	\$46,853	\$56,850	\$61,784	\$68,037	↑	10%
Median Family Income	\$39,355	\$45,088	\$52,340	\$54,974	\$62,118	↑	13%
<b>Lone-Parent Families</b>							
Average Family Income	N.A.	N.A.	N.A.	\$37,677	\$45,760	↑	21%
Median Family Income	N.A.	N.A.	N.A.	\$29,872	\$38,620	↑	29%

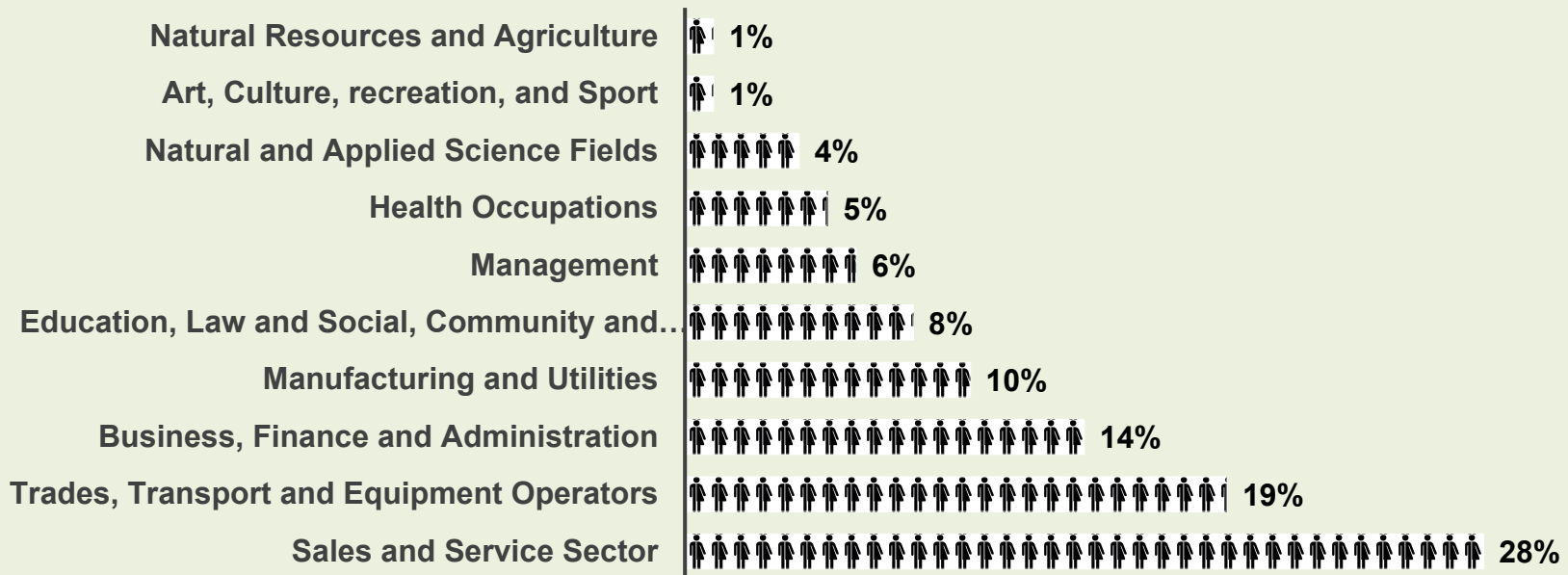
<sup>3</sup> Data Note: Income figures based on previous reporting year and reflect gross earnings (1995, 2000, 2005, 2010 & 2015).





Labour Force by National Occupational Classification	1996	2001	2006	2011	2016	Change From Previous Period (2011 to 2016)		As a % of East London Active Labour Force
Management	400	250	335	370	515	↑	39%	9%
Business, Finance and Administration	870	940	1,080	940	745	↓	-21%	13%
Natural and Applied Science Fields	195	230	330	170	280	↑	65%	5%
Health Occupations	195	220	180	165	305	↑	85%	5%
Education, Law and Social, Community and Government Services	230	340	325	415	620	↑	49%	11%
Art, Culture, recreation, and Sport	80	120	130	140	160	↑	14%	3%
Sales and Service Sector	1,585	1,650	1,430	1,600	1,660	↑	4%	28%
Trades, Transport and Equipment Operators	1,000	1,230	1,050	965	945	↓	-2%	16%
Natural Resources and Agriculture	115	90	70	50	95	↑	90%	2%
Manufacturing and Utilities	615	70	670	350	380	↑	9%	6%

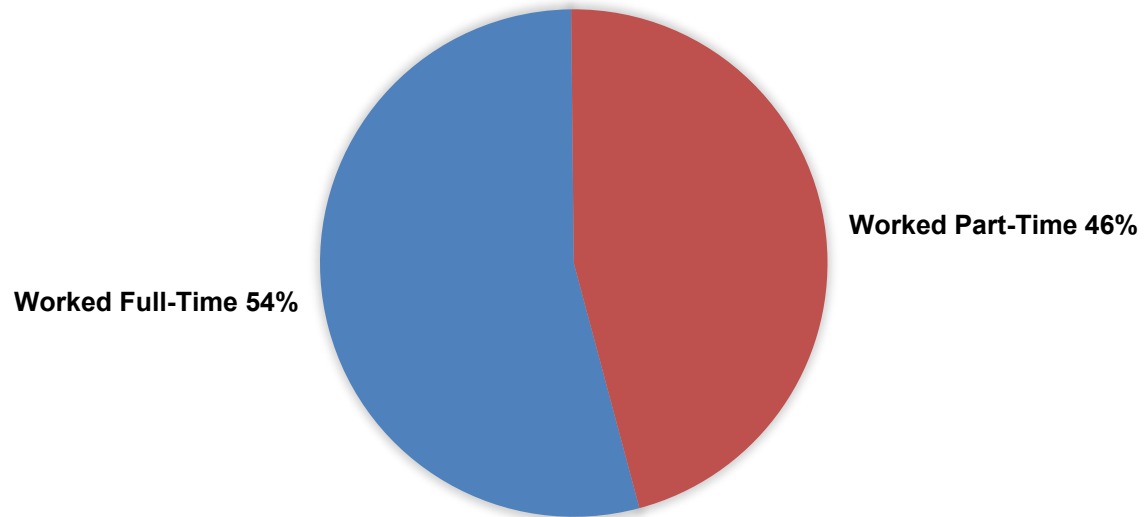
## Employment Trends by Occupation Breakout - 2016



Class of Worker	1996	2001	2006	2011	2016	Change From Previous Period		As a % of Neighbourhood
						Direction	Percentage	
<b>Employee</b>	<b>4,825</b>	<b>5,160</b>	<b>5,210</b>	<b>4,795</b>	<b>5,210</b>	↑	9%	<b>50%</b>
Female	2,180	2,380	2,390	2,495	2,480	↓	-1%	24%
Male	2,645	2,780	2,820	2,300	2,735	↑	19%	26%
<b>Self-Employed</b>	<b>440</b>	<b>515</b>	<b>370</b>	<b>370</b>	<b>495</b>	↑	34%	<b>5%</b>
Female	135	145	110	140	180	↑	29%	2%
Male	305	370	260	225	320	↑	42%	3%

Employment Status	1996	2001	2006	2011	2016	Change From Previous Period (2011 to 2016)		As a % of East London Active Labour Force
Worked Full-Time in 2015	N.A.	N.A.	N.A.	4,135	3,135	↓	-24%	52%
Worked Part-Time in 2015	N.A.	N.A.	N.A.	875	2,890	↑	230%	48%

**Employment Status, 2015 Reference Period**



Mode of Transport to Work	1996	2001	2006	2011	2016	Change From Previous Period (2011 to 2016)		As a % of East London Active Labour Force
Automobile - As a Driver	3,180	3,500	3,180	2,980	3,270	↑	10%	56%
Car-Pool	300	340	625	220	400	↑	82%	7%
Public Transportation	530	505	535	565	735	↑	30%	12%
Walked or Bicycled	530	610	585	645	620	↓	-4%	11%
Other Modes	40	55	60	20	65	↑	225%	1%

Place of Work	1996	2001	2006	2011	2016	Change From Previous Period (2011 to 2016)		As a % of Neighbourhood
Worked at Home	250	240	220	325	230	↓	-29%	2%
Worked at a Fixed Address	4,150	4,335	4,505	3,990	4,345	↑	9%	42%
No Fixed Workplace Address	435	690	490	440	740	↑	68%	7%
Worked within Municipality	3,780	3,965	4,065	N.A.	3,870	N.A.		37%
Work in a different Municipality	370	415	515	N.A.	365	N.A.		4%
Worked outside Canada	0	0	30	0	10	↑		<1%

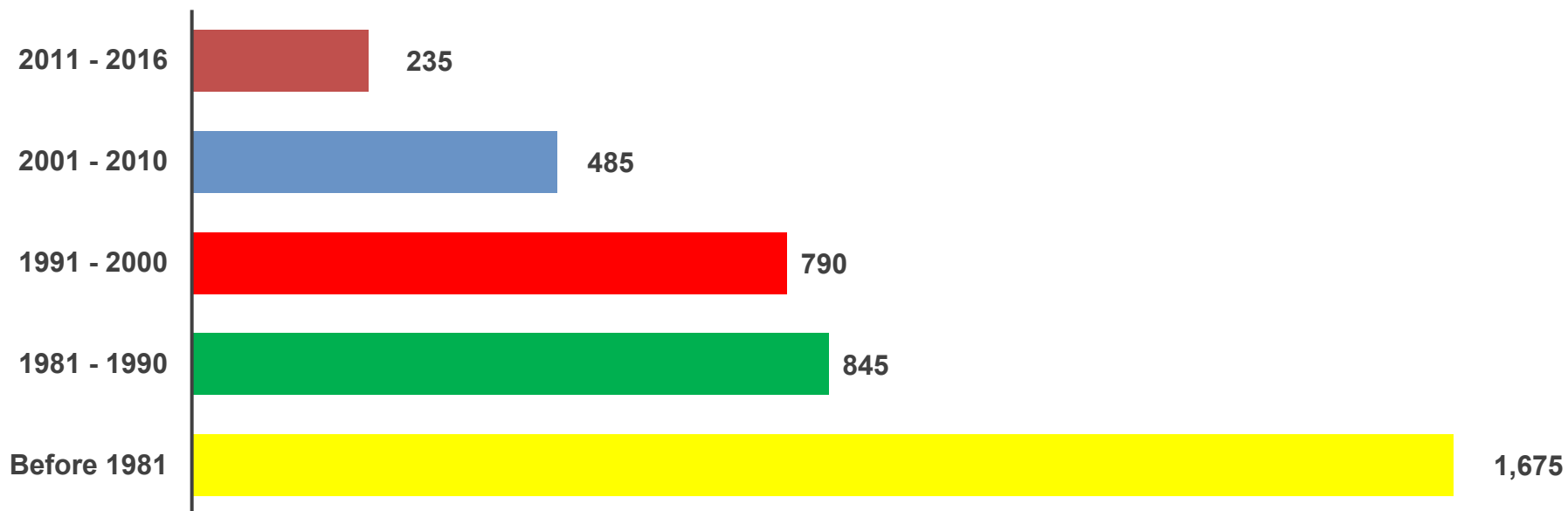
Mobility/Migration Status	1996	2001	2006	2011	2016	Change From Previous Period (2011 to 2016)		As a % of Neighbourhood
Lived at the same address 5 years ago	4,960	5,275	5,390	4,900	5,175	↑	6%	50%
Moved sometime within the last 5 years	5,085	4,485	4,465	4,135	4,685	↑	13%	45%
Internal Migrants	970	1,135	1,190	755	1,235	↑	64%	12%
- Intra-provincial	885	960	1,035	685	1,095	↑	60%	11%
- Inter-provincial	90	180	160	65	135	↑	108%	1%
External Migrants	175	145	150	0	225	↑		2%
Lived at the same address 1 years ago	8,400	8,000	8,365	7,435	8,195	↑	10%	79%
Moved sometime within the last year	2,300	2,260	1,925	1,930	2,040	↑	6%	20%
Internal Migrants	375	545	495	260	480	↑	85%	5%
- Intra-provincial	300	515	390	210	425	↑	102%	4%
- Inter-provincial	80	35	110	45	55	↑	22%	1%
External Migrants	25	90	75	0	95	↑		1%

Place of Birth by Region	2011	2016	Change From Previous Period (2011 to 2016)		As a % of Neighbourhood
<b>Total Immigrant Population</b>	<b>1,220</b>	<b>1,120</b>	↓	-8%	<b>11%</b>
North America (US only)	65	105	↑	62%	1%
Africa	65	35	↓	-46%	<1%
Asia	65	245	↑	277%	2%
Caribbean	30	N.A.	N.A.		N.A.
Central and South America	70	190	↑	171%	2%
Oceania and other places of birth	N.A.	10	N.A.		<1%
Europe	35	545	↑	1,457%	5%
<b>Recent Immigrants</b>	<b>55</b>	<b>90</b>		<b>64%</b>	<b>1%</b>
North America (US only)	20	15	↓	-25%	<1%
Africa	0	0	=		0%
Asia	0	35	=		<1%
Caribbean	0	N.A.	N.A.		N.A.
Central and South America	0	30	↑		<1%
Oceania and other places of birth	N.A.	N.A.	N.A.		N.A.
Europe	20	10	↓	-50%	<1%

Immigration by Place of Birth 2011	2011	As a % of Neighbourhood 2011	Immigration by Place of Birth 2016	2016	As a % of Neighbourhood 2016
1. United Kingdom	235	2%	1. United Kingdom	195	2%
2. Poland	205	2%	2. Poland	110	1%
3. Germany	60	<1%	3. United States	105	1%
4. United States	65	<1%	4. Portugal	60	1%
5. Portugal	60	<1%	5. India	50	<1%
6. N.A.	N.A.	N.A.	6. Colombia	45	<1%
7. N.A.	N.A.	N.A.	7. El Salvador	40	<1%
8. N.A.	N.A.	N.A.	8. China	35	<1%
9. N.A.	N.A.	N.A.	9. Germany	30	<1%
10. N.A.	N.A.	N.A.	10. Greece	30	<1%

Period of Immigration	1996	2001	2006	2011	2016	Change From Previous Period (2011 to 2016)		As a % of Neighbourhood
						Direction	Percentage	
Before 1981	N.A.	N.A.	835	590	465	↓	-21%	4%
1981 to 1990	N.A.	N.A.	250	315	175	↓	-44%	2%
1991 to 2000	N.A.	N.A.	185	230	195	↓	-15%	2%
2001 to 2010	N.A.	N.A.	125	85	200	↑	135%	2%
2011 to 2016	N.A.	N.A.	N.A.	N.A.	90	N.A.		1%

**Foreign Born - Population by Period of Immigration**





Language	1996	2001	2006	2011	2016	Change From Previous Period (2011 to 2016)		As a % of Neighbourhood
<b>Knowledge of Official Languages</b>								
English Only	10,075	9,630	9,670	8,955	9,595	↑	7%	93%
French Only	0	0	10	0	0	↓		0%
English and French	630	620	610	555	975	↑	22%	7%
Neither English or French	170	110	65	40	80	↑	100%	1%
<b>Language Spoken Most Often at Home</b>								
English	9,335	9,440	9,005	9,085	9,750	↑	7%	94%
French	165	125	125	25	20	↓	-20%	0%
Non-Official Language	1,225	1,025	1,175	1,060	405	↓	-62%	4%
<b>Mother Tongue <sup>4</sup></b>								
English	10,060	9,440	9,690	8,560	9,275	↑	8%	90%
French	20	0	20	140	100	↓	-29%	1%
Non-Official Language	705	360	615	765	865	↑	13%	8%

<sup>4</sup> Statistics Canada defines 'mother tongue' as the first language learned in childhood and still understood by the individual at the time of census reporting.

Top Non-Official Languages Spoken At Home <sup>5</sup>	2016	As a % of Neighbourhood
Spanish	85	1%
Polish	50	<1%
Portuguese	40	<1%
Greek	30	<1%
Vietnamese	25	<1%
Cantonese	25	<1%
Korean	20	<1%
Mandarin	20	<1%
Russian	15	<1%

<sup>5</sup> Data Note: The 2011 Neighbourhood profiles data reported on languages was discontinued in 2016; therefore, cannot be compared to 2016 data.